



**Allsop Place, NW1**  
**£1,799,000**



## Allsop Place, NW1

A two double bedroom, two bathroom apartment with day porter, balcony and under building parking. Set in a modern apartment building located between Regents Park and Marylebone High Street.

The apartment has a 33 ft combined reception kitchen with adequate space to dine. The room is dual aspect and a glazed door opens to the balcony. The main bedroom has fitted wardrobes and an en suite bathroom room, The second double bedroom also has fitted wardrobes. Additionally there is a main bathroom.

Local transport links are at Baker Street. Clarence Gate, the south entrance of Regents Park is moments away.

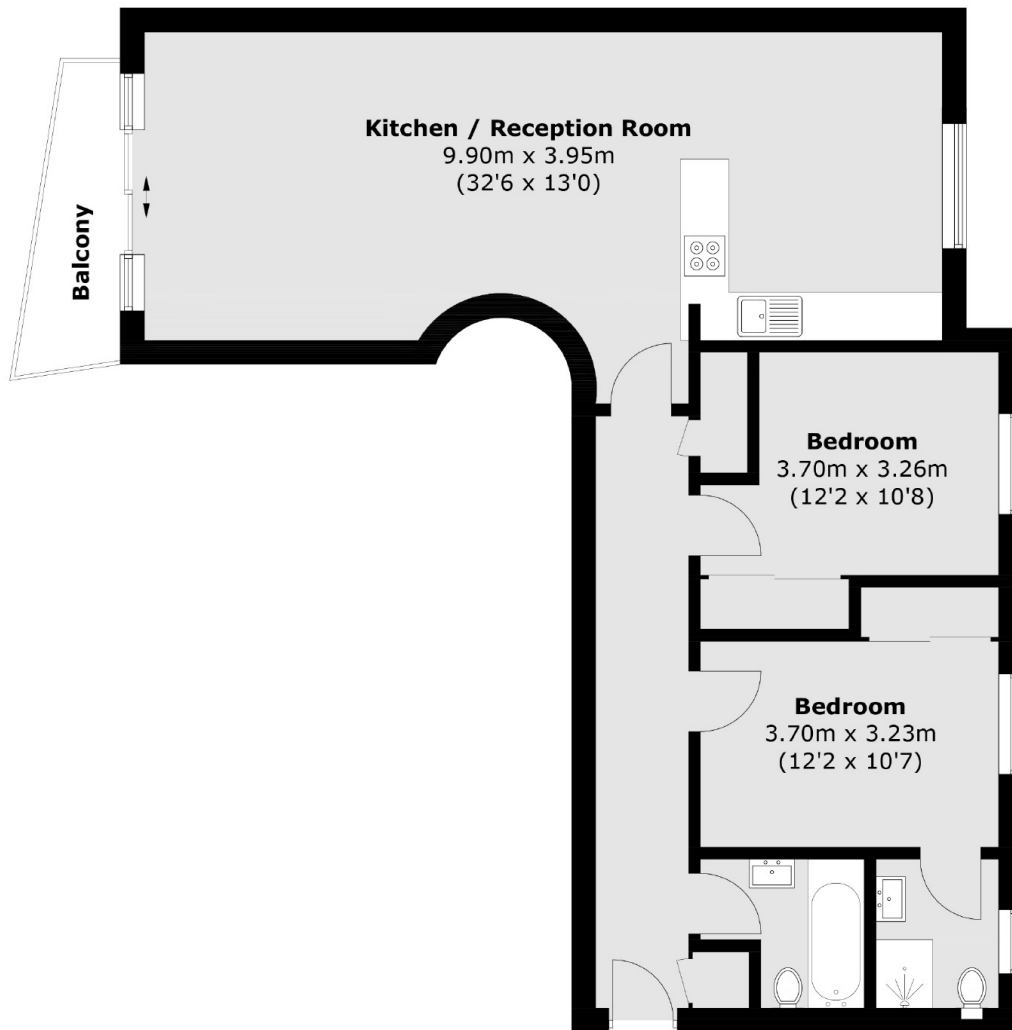
### Features

- Two Double Bedrooms
- Two Bathrooms
- Under Building Parking
- Day Porter and Lift
- Third Floor
- Lease 999 from 2010





# Allsop Place, London, NW1



## Third Floor

Total area (approx.): 78.8 sq. m (848.2 sq. ft)  
Balcony area (approx.): 3.8 sq. m (40.9 sq. ft)

# Dexters

Marylebone  
53-55 Weymouth Street  
London  
W1G 8NJ  
Sales  
020 7224 5544

Energy Rating: B. We aim to make our particulars both accurate and reliable. However they are not guaranteed; nor do they form part of an offer or contract. If you require clarification on any points then please contact us, especially if you're traveling some distance to view. Please note that appliances and heating systems have not been tested and therefore no warranties can be given as to their good working order.

 **RICS** | Regulated  
Estate Agent  
and Letting Agent

[dexters.co.uk](https://www.dexters.co.uk)