

Brunswick Mews, W1H

£1,150,000

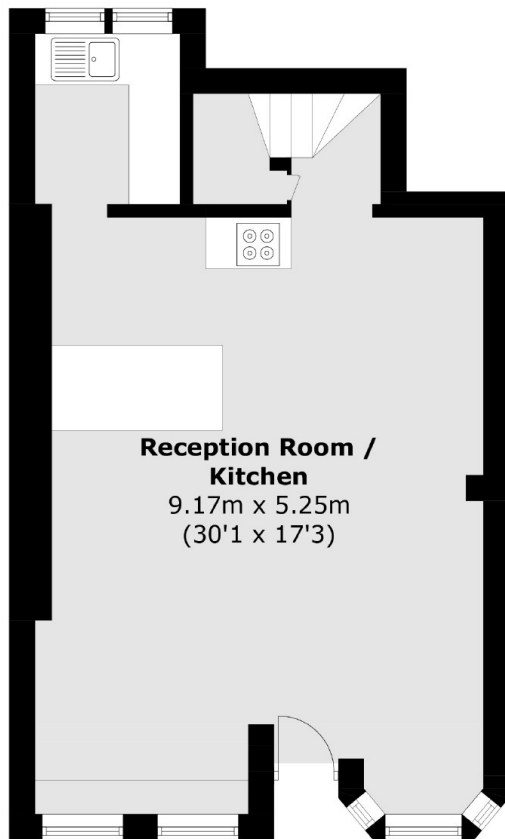
A two bedroom, two bathroom house in a cobbled residential mews approached from Great Cumberland Place.

Located moments from Portman Village, Marble Arch Station and Hyde Park.

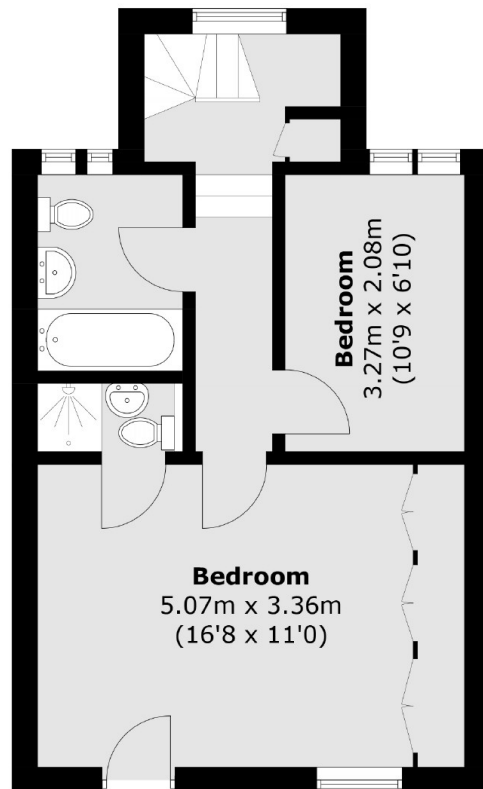
Features

Two Bedrooms
Open Plan Living
Mews Location
Two Bathrooms
Utility

Brunswick Mews, London, W1H



Ground Floor



First Floor

Total area (approx.): 81.3 sq. m (875 sq. ft)

Dexters

Marylebone
53-55 Weymouth Street
London
W1G 8NJ
Sales
020 7224 5544

Energy Rating: D. We aim to make our particulars both accurate and reliable. However they are not guaranteed; nor do they form part of an offer or contract. If you require clarification on any points then please contact us, especially if you're traveling some distance to view. Please note that appliances and heating systems have not been tested and therefore no warranties can be given as to their good working order.

 **RICS** | Regulated
Estate Agent
and Letting Agent

[dexters.co.uk](https://www.dexters.co.uk)