



## Cabbell Street, NW1

£1,500 Per week

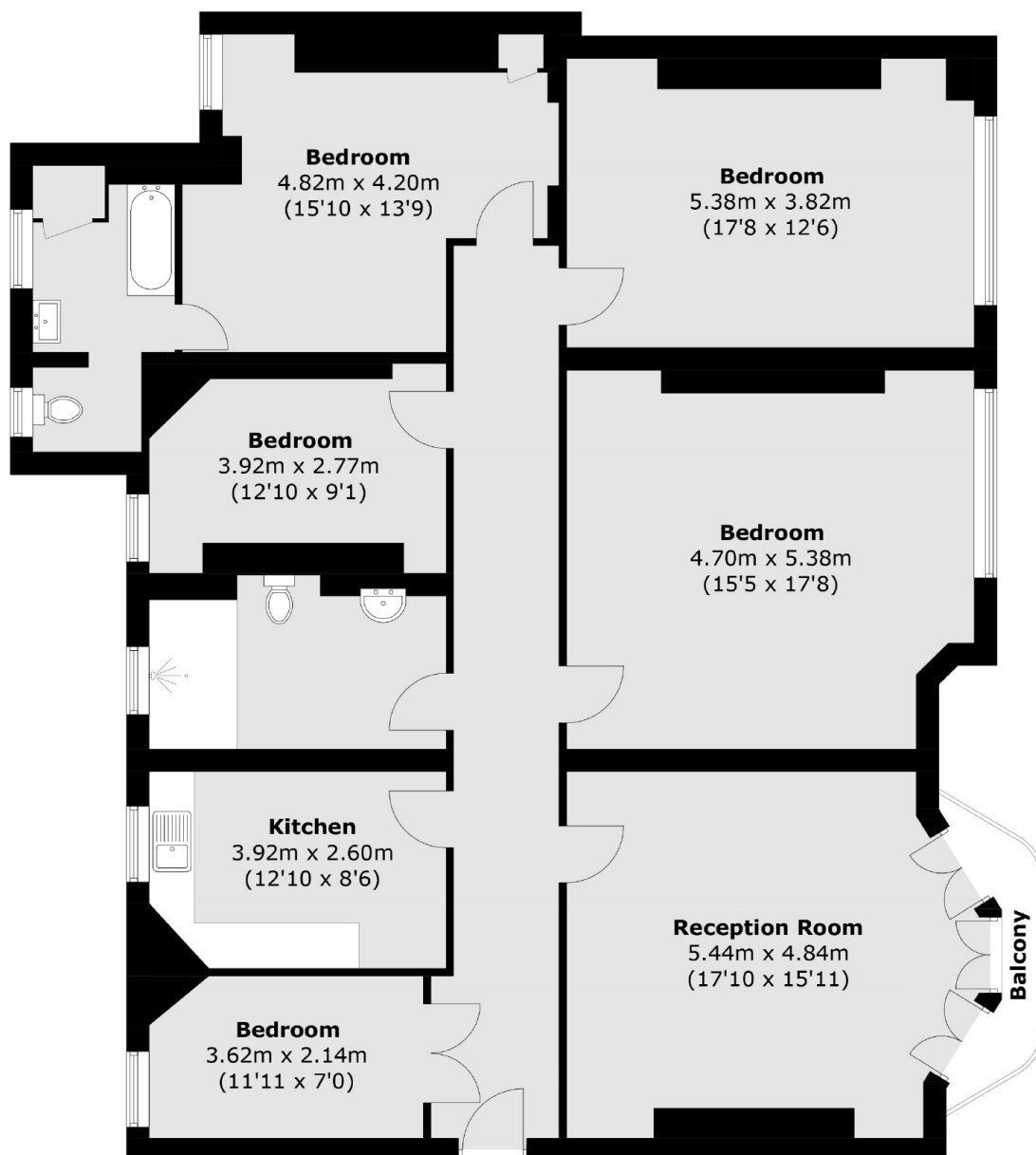
A lateral four bedroom apartment on the second floor of this red brick mansion block on Cabbell Street. The property has a large reception room with floor-to-ceiling windows providing superb natural light, wood flooring, and doors onto a Juliette balcony and a separate modern kitchen. There are four double bedrooms plus a study, and two modern bathrooms (one en suite shower room).

The property is between Hyde Park and Regent's Park with a superb selection of cafes, shops, bars and restaurants. The waterside recreation area of Paddington Basin is moments away. Paddington Station is located just beyond with fast links to London Heathrow.

### Features

Second Floor  
Four Bedrooms  
Study  
Two Bathrooms  
Kitchen  
Large Reception Room

# Cabbell Street, London, NW1



Total area (approx.): 158.8 sq. m (1,709.3 sq. ft)  
Balcony area (approx.): 2.5 sq. m (26.9 sq. ft)

## Dexters

Marylebone  
53-55 Weymouth Street  
London  
W1G 8NJ  
Lettings  
0207 224 5545

Energy Rating: C. We aim to make our particulars both accurate and reliable. However they are not guaranteed; nor do they form part of an offer or contract. If you require clarification on any points then please contact us, especially if you're traveling some distance to view. Please note that appliances and heating systems have not been tested and therefore no warranties can be given as to their good working order.

 **RICS** | Regulated  
Estate Agent  
and Letting Agent

[dexters.co.uk](https://www.dexters.co.uk)