



Wyndham Yard, W1H

£1,750,000

A two bedroom freehold house which is one of just two dwellings set behind a gated entrance. With a roof terrace accessible from the house.

Located in quiet west Marylebone between Bryanston Square and St Marys Church on Wyndham Place. The retail and restaurants of Marylebone High Street, Portman Village and easily accessible.

Features

- Freehold
- Two Double Bedrooms
- Roof Terrace
- Two Bathrooms
- Parking
- Gated Entrance

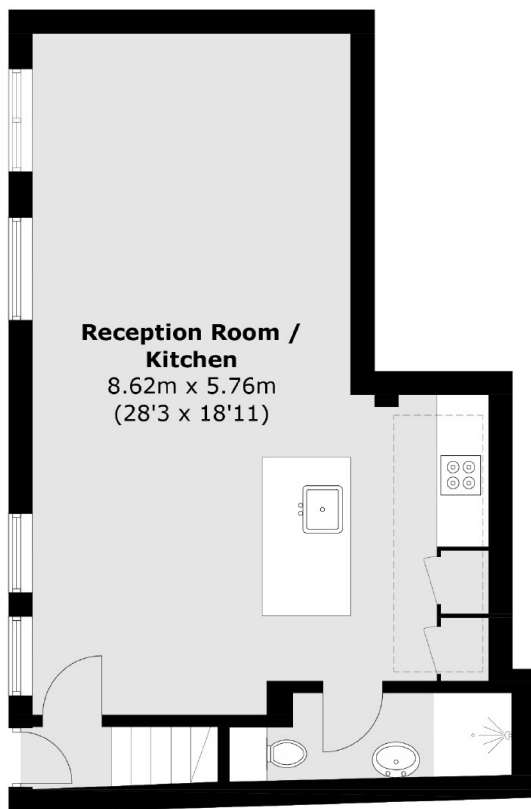


Wyndham Yard, W1H

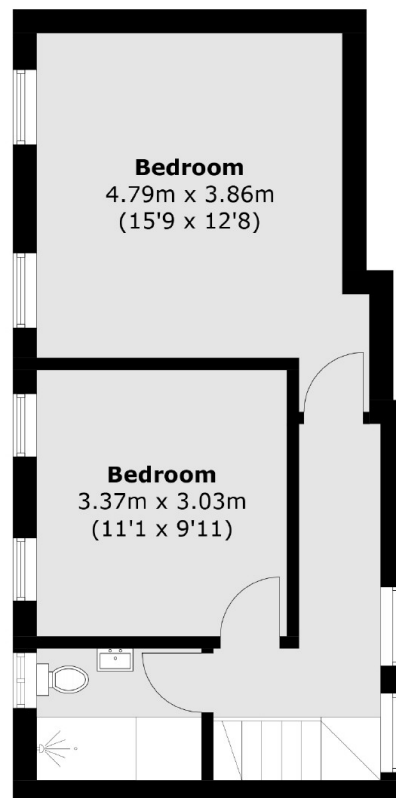
The house has a bright neutral scheme with a open plan reception kitchen on the ground floor, guest cloakroom/shower room. On the first floor there is a shower room and two double bedrooms. The roof area is accessed from a retractable ladder on the first floor landing.



Wyndham Yard, London, W1H



Ground Floor



First Floor

Total area (approx.): 86.2 sq. m (927.8 sq. ft)