



Luxborough Street, W1U

£715 Per week

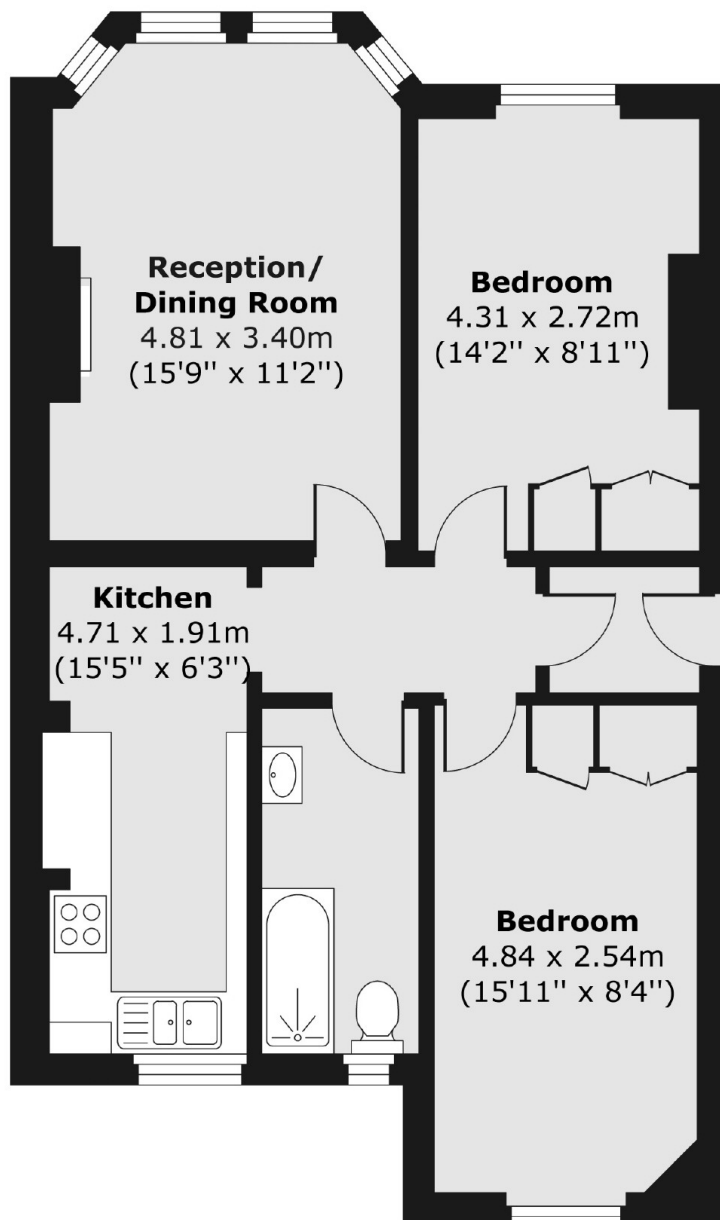
A two double bedroom apartment on the raised ground floor of this prestigious mansion block in Marylebone. The flat has a dining/reception room with lots of light, a separate kitchen, two bedrooms with storage and a bathroom.

Luxborough Street is in Marylebone Village, with the vibrant shops and bars of Marylebone High Street close by. Baker Street station and the open spaces of Regent's Park are only a short walk away.

Features

- Ground Floor
- High Ceilings
- Two Bedrooms
- One Bathroom
- Separate Kitchen
- Dining/Reception

Luxborough Street, London, W1U



Total area (approx.) 62.39 sq. m (672 sq. ft)