



## Manchester Street, W1U

£692 Per week

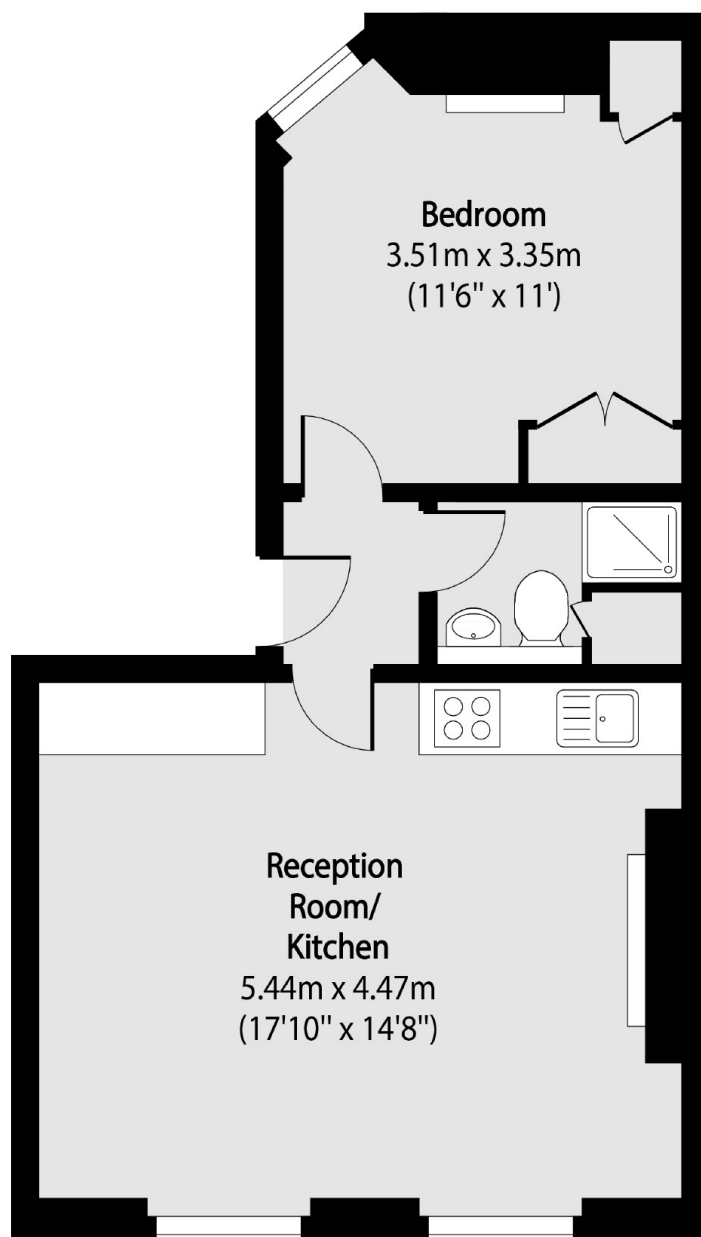
A one bedroom apartment on the third floor of this Georgian conversion in the heart of Marylebone Village. The property has an open-plan kitchen/reception room with wood flooring, double bedroom and shower room.

Manchester Street is an attractive street in the heart of Marylebone Village made up of predominantly Georgian buildings. Situated between Marylebone High Street and Chiltern Street, with an abundance of independent boutique shops, cafes, bars and restaurants nearby.

### Features

- Third Floor Flat
- Marylebone Village
- One Bedroom
- Owned and Managed by The Portman Estate
- Complimentary Membership to Portman Concierge

# Manchester Street, London, W1U



Total area (approx): 40.96 sq m (441 sq. ft)