



Great Cumberland Place, W1H

£761 Per week

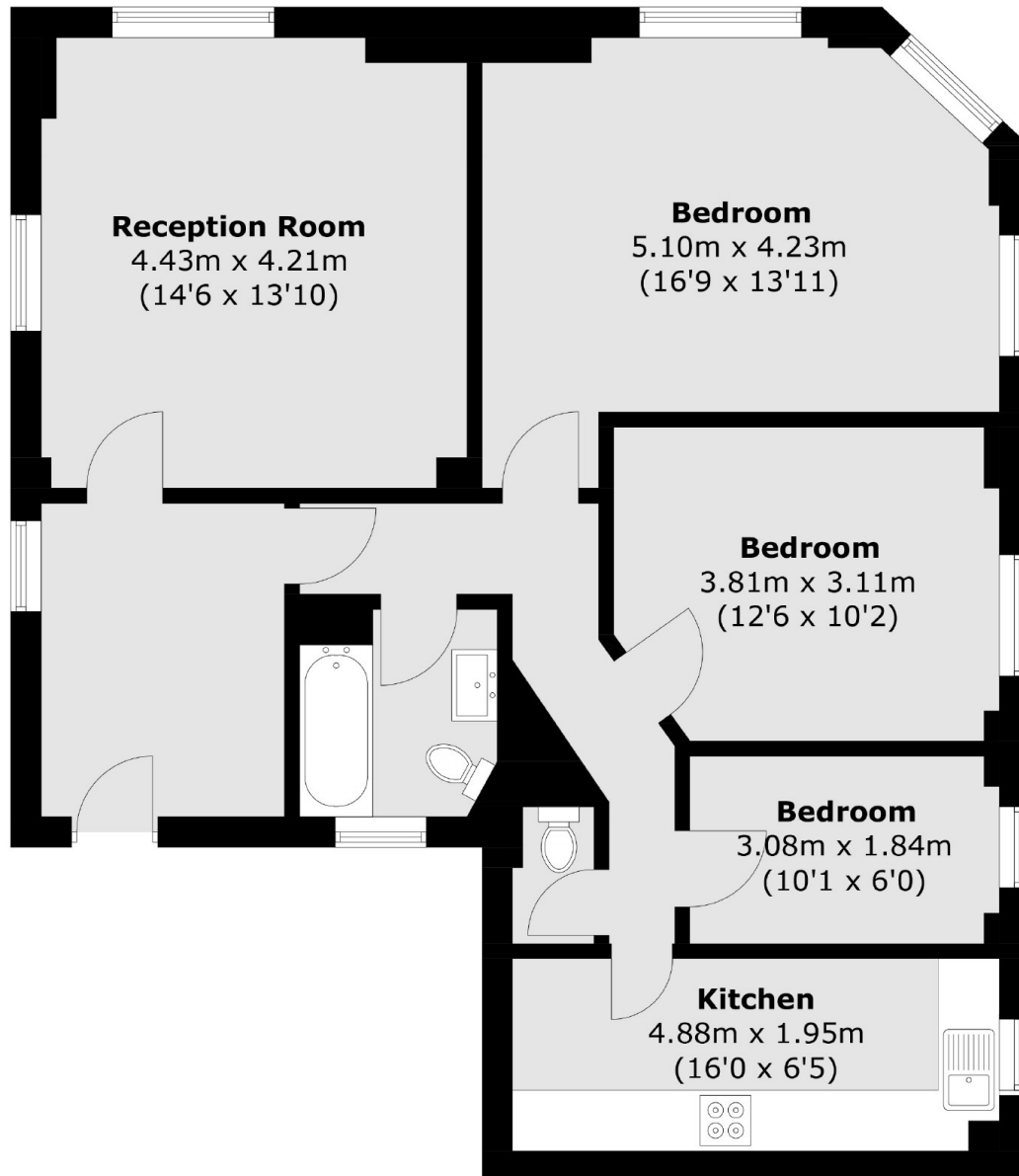
A bright two/three bedroom apartment on the fourth floor of a Marble Arch apartment block, moments from Hyde Park and Oxford Street. Residents benefit from CCTV, 24 hour uniformed concierge and modern lifts. The flat has two/three bedrooms, kitchen, separate reception room, bathroom and a guest WC.

Great Cumberland Place is a short walk from the boutique shops, bars and restaurants of Marylebone High Street. Portman Village, which has become the culinary centre for Marylebone's foodies, is just a few streets away; the independent restaurants, cafés and wine bars are popular with locals and tourists alike.

Features

- NO HMO
- Fourth Floor Apartment
- Lift And Concierge
- Moments From Hyde Park
- Two/Three Bedrooms
- Bathroom & Guest WC
- Separate Kitchen
- Large Reception

Great Cumberland Place, London, W1H



Total area (approx.): 88.0 sq. m (947.2 sq. ft)