



Nottingham Place, W1U

£595 Per week

A well-presented one bedroom apartment in the heart of Marylebone Village. The property has an open-plan kitchen/reception room with wood flooring and modern fixtures & fittings, bedroom and bathroom.

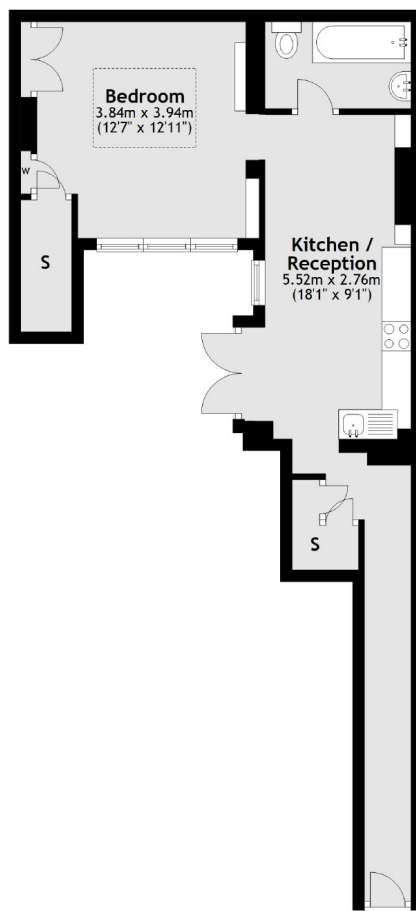
The flat is in the heart of Marylebone Village, with the boutique shops, bars and restaurants of the High Street virtually on your doorstep. Portman Village is a short walk away along with the open spaces of Regent's Park.

Features

Marylebone Village
One Bedroom
One Bathroom
Kitchen/Reception
Outside Space
Furnished

Nottingham Place, London, W1U

Lower Ground Floor



Total area: approx. 43.9 sq. metres (472.2 sq. feet)

Dexters

Marylebone
53-55 Weymouth Street
London
W1G 8NJ
Lettings
0207 224 5545

Energy Rating: D. We aim to make our particulars both accurate and reliable. However they are not guaranteed; nor do they form part of an offer or contract. If you require clarification on any points then please contact us, especially if you're traveling some distance to view. Please note that appliances and heating systems have not been tested and therefore no warranties can be given as to their good working order.

 **RICS** | Regulated
Estate Agent
and Letting Agent

[dexters.co.uk](https://www.dexters.co.uk)