



Weymouth Street, W1W

£925,000

A spacious turnkey one bedroom apartment situated in a desirable portered mansion block.

The property boasts a prime location positioned between Marylebone and Fitzrovia, a short walk away from Regent's Park and Marylebone High Street. It is conveniently located near Regent's Park, Great Portland Street and Oxford Circus underground stations, providing excellent transport links. The area also benefits from a wealth of shops, cafes and restaurants.

Features

- Double Bedroom
- Porter
- Lift
- Long Lease
- High Ceilings
- Ample Storage
- Prestigious Building

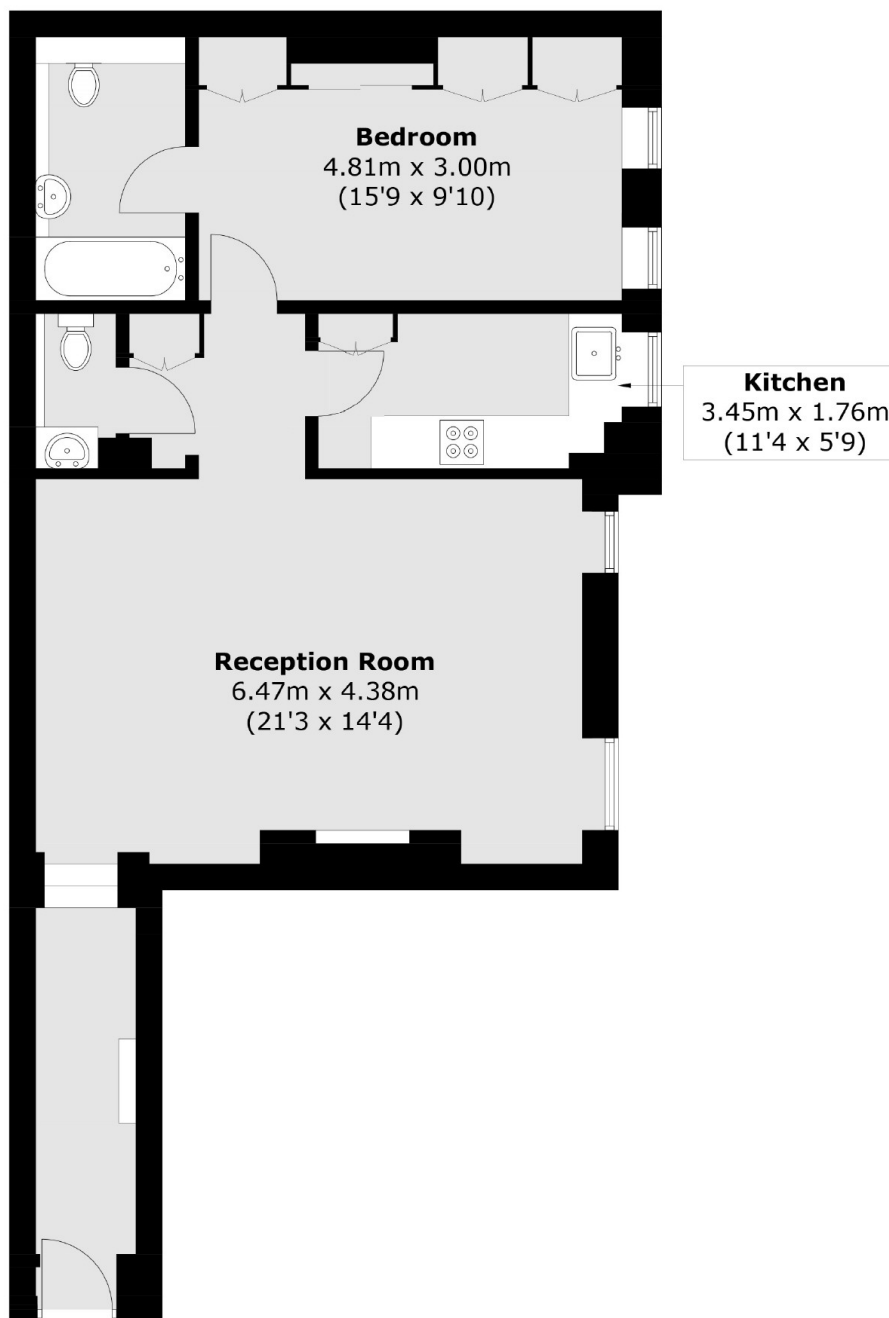


Weymouth Street, W1W

The well thought out property features Herringbone parquet flooring, high ceilings throughout and floor to ceiling windows. Meticulously refurbished, the wide corridor leads to a large reception room, separate kitchen, double bedroom, en-suite modern bathroom, and separate WC, all offering ample storage space.



Weymouth Street, London, W1W



Total area (approx.): 67.3 sq. m (724.4 sq. ft)

Dexters

Marylebone
53-55 Weymouth Street
London
W1G 8NJ
Sales
020 7224 5544

Energy Rating: D. We aim to make our particulars both accurate and reliable. However they are not guaranteed; nor do they form part of an offer or contract. If you require clarification on any points then please contact us, especially if you're traveling some distance to view. Please note that appliances and heating systems have not been tested and therefore no warranties can be given as to their good working order.

 **RICS** | Regulated
Estate Agent
and Letting Agent

dexters.co.uk