



Hallam Street, W1W

£1,950,000

Dexters



Hallam Street, W1W

A two bedroom, two bathroom apartment with open reception space. Located in a portered block convenient for Marylebone High Street and Regents Park.

The second floor apartment has two large bedrooms with built in wardrobes and en suite bathrooms, a open plan reception and dining room and a separate kitchen. The property further benefits from large windows and wood and tiled flooring.

Transport links at Regent's Park and Great Portland Street are close by.

Features

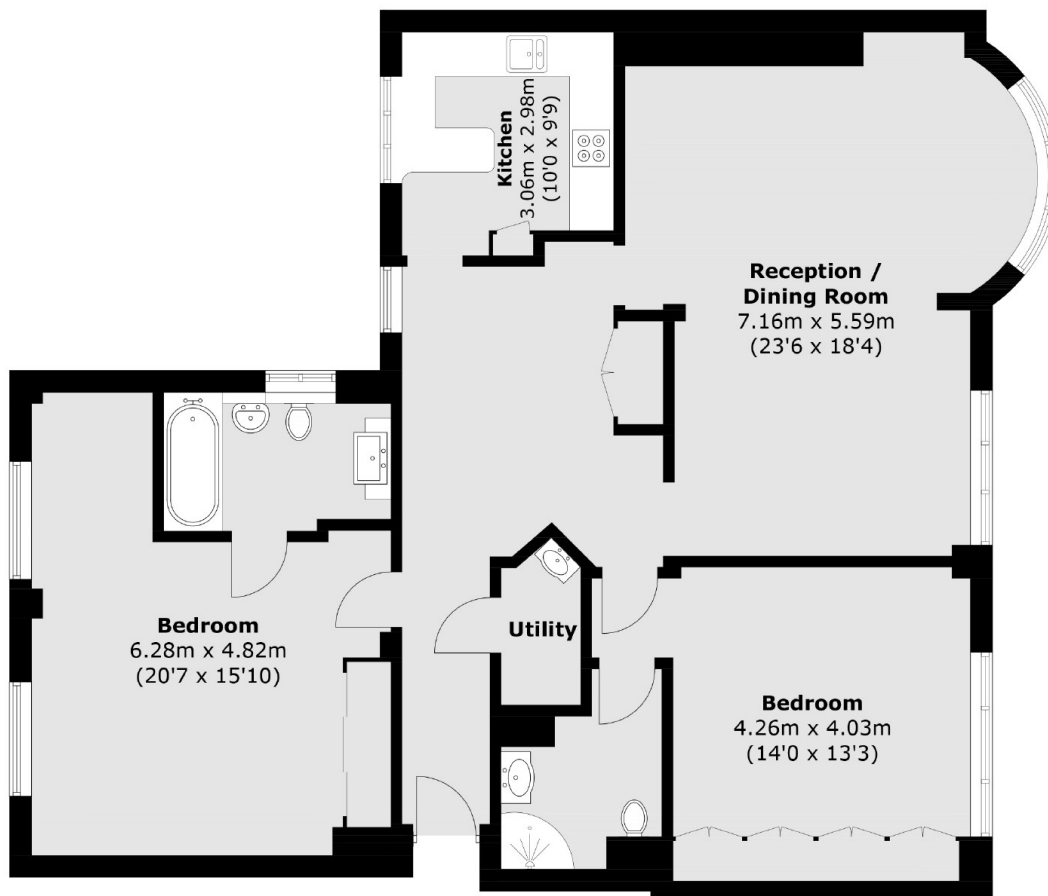
- Two Double Bedrooms
- Two En Suite Bathrooms
- Reception - Dining Room
- Kitchen
- Lease to 07/05/2125
- Lift and Porter







Hallam Street, London, W1W



Total area (approx.): 121.1 sq. m (1,303.5 sq. ft)

Dexters

Marylebone
53-55 Weymouth Street
London
W1G 8NJ
Sales
020 7224 5544

Energy Rating: C. We aim to make our particulars both accurate and reliable. However they are not guaranteed; nor do they form part of an offer or contract. If you require clarification on any points then please contact us, especially if you're traveling some distance to view. Please note that appliances and heating systems have not been tested and therefore no warranties can be given as to their good working order.

 **RICS** | Regulated
Estate Agent
and Letting Agent

[dexters.co.uk](https://www.dexters.co.uk)