



## Rodmarton Street, W1U

£1,600,000

A two double bedroom, two bathroom house with a garage and courtyard garden. Made available by The Portman Estate, stewards of one of London's great historic estates.

Located moments from Baker Street, Marylebone High Street and Regents Park. Local Stations are Baker Street, London Marylebone and Bond Street.

### Features

- Two Bedrooms
- Two Bathrooms
- Reception opens to courtyard
- Kitchen & Utility
- Garage
- 999 Year Lease



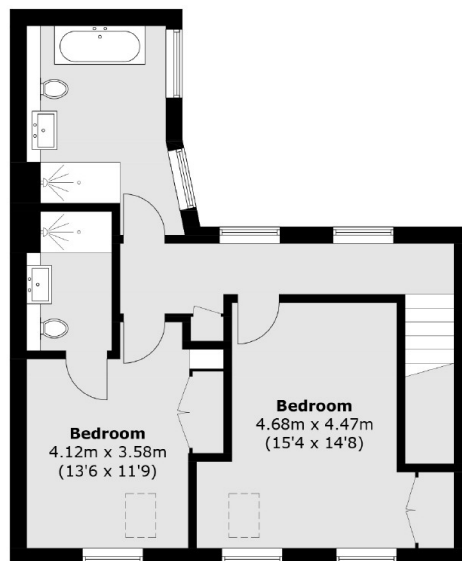
## Rodmarton Street, W1U

The house has a bright open plan reception room with adequate space to dine. Both this room and the kitchen-breakfast room have bi fold doors which open to the courtyard garden. The first floor has two double bedrooms with vaulted ceilings and fitted wardrobes. The main room has an en suite shower room. Additionally there is a large main bathroom.

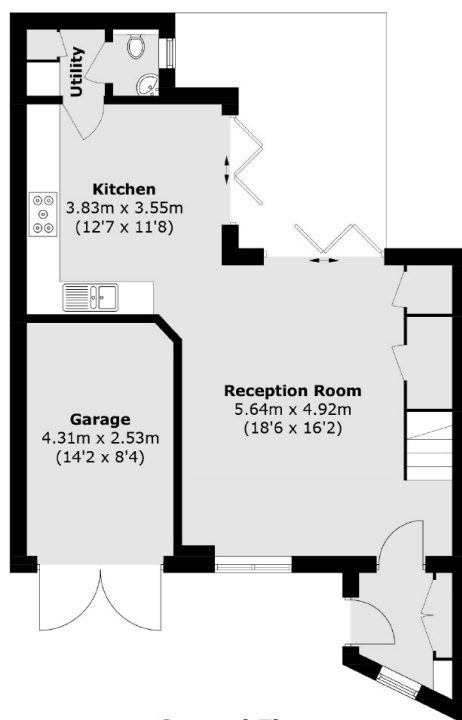




# Rodmarton Street, London, W1U



**First Floor**



**Ground Floor**

Approx Internal Area: 100.6 sq. m (1,082.9 sq. ft)  
Garage: 11.6 sq. m (124.9 sq. ft)  
Total: 112.2 sq. m (1,207.8 sq. ft)