



Paddington Street, W1U

£1,960 Per week

Dexters



Paddington Street, W1U

Arranged over four floors is this modern four-bedroom home with a spacious private rear terrace in Marylebone Village. *Please note that the furniture shown in the photographs have been added virtually*

On the ground floor you have a kitchen/utility room, guest WC and access to the private terrace. On the first floor there is an open-plan kitchen/reception room with a breakfast bar to the kitchen and a guest WC off the hallway. All four bedrooms are double rooms with an en suite bathroom to the principal bedroom and a further bathroom on the third floor.

The property has a contemporary finish with built-in modern appliances and feature LED lighting to the kitchen and utility areas, underfloor heating to the bathrooms, Amtico wood effect luxury vinyl flooring and plenty of storage throughout.

The location is unrivalled; residents can enjoy a village vibe in the heart of central London whilst benefitting from all the shops, theatres and attractions the West End has to offer. The bars, cafes and restaurants of Marylebone High Street are virtually on your doorstep and Paddington Street gardens are only moments away. Regent's Park is a short walk from the property.

Features

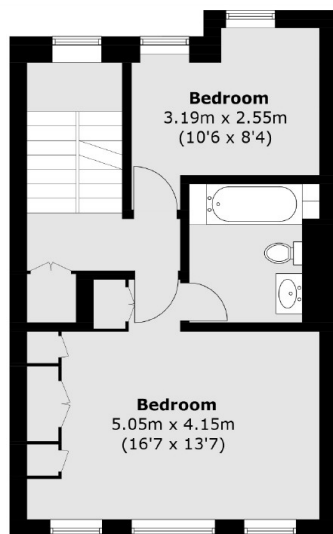
- Four Bedrooms
- Two Bathrooms
- Two Guest WCs
- Kitchen/Reception
- Further Kitchen/utility
- Private Terrace



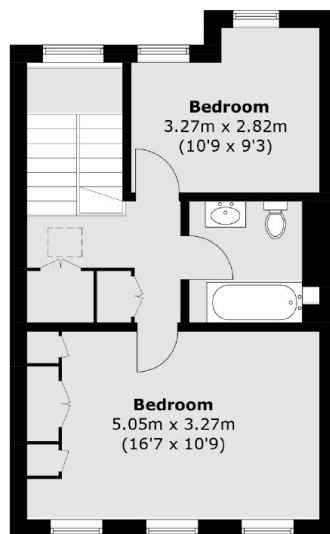




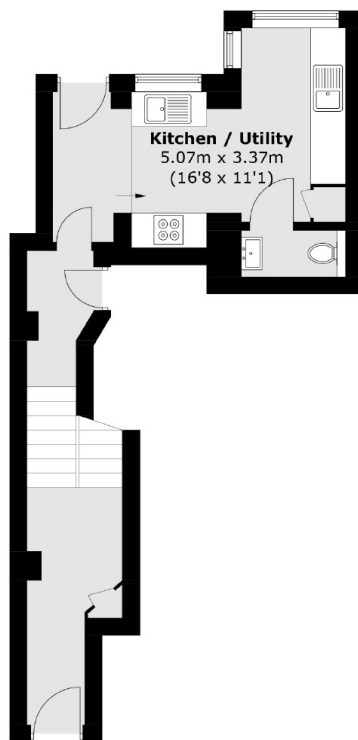
Paddington Street, London, W1U



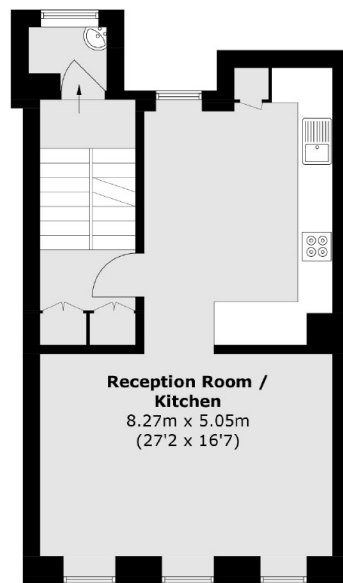
Second Floor



Third Floor



Ground Floor



First Floor

Total area (approx.): 152.2 sq. m (1,638.1 sq. ft)