

Bulstrode Street, W1U

£850,000

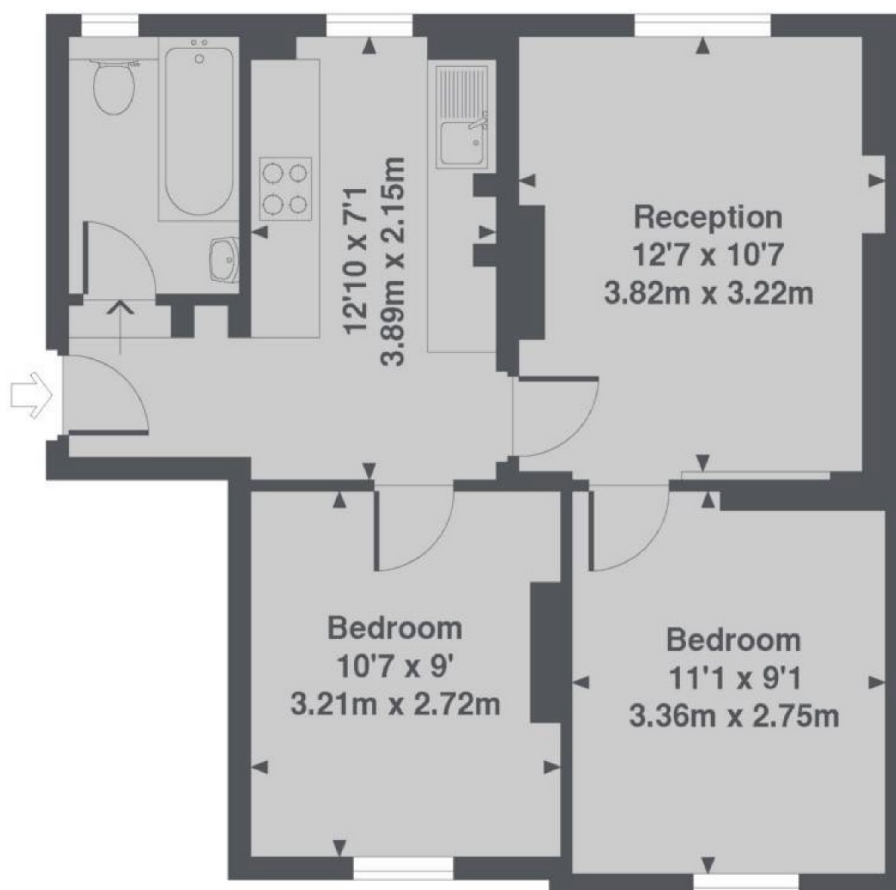
This two bedroom apartment is on the first floor of a period building off Marylebone Lane in the heart of the village. The property will be sold chain free with the benefit of a long lease.

Marylebone village is home to a range of boutique shops, bars and restaurants. Bond Street station is nearby.

Features

- First Floor Apartment
- Marylebone Village Location
- Two Double Bedrooms
- Bathroom
- Kitchen
- Reception

Bulstrode Street, London, W1U



1st Floor

Bentick House, Bulstrode Street, W1U
Total Approx. Floor area 500 Sq. Ft. (46.4 Sq. M.)