



Allsop Place, NW1

£950,000

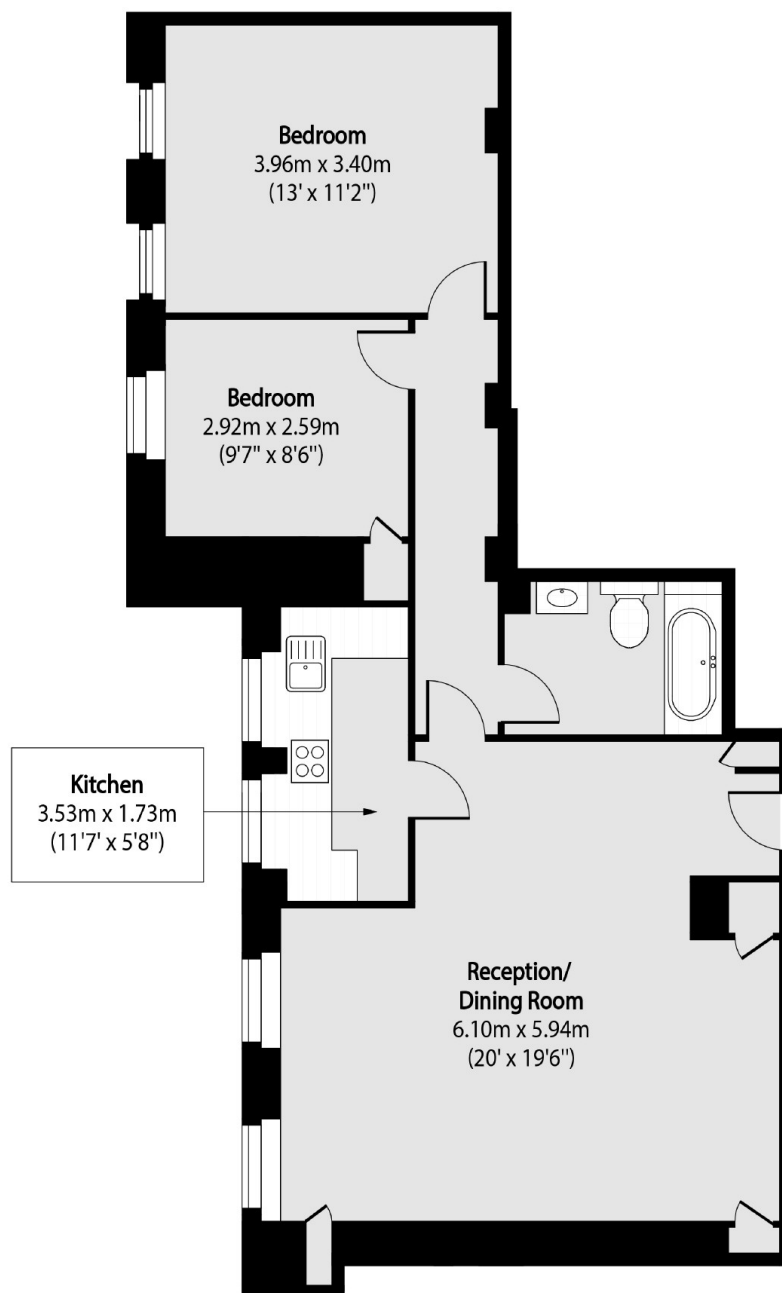
A two double bedroom apartment with views towards Regents Park. Situated moments from Marylebone High Street in a residential block with a porter.

Located moments from Marylebone High Street, Regent's Park and the transport links of Baker Street Station.

Features

- Two Double Bedrooms
- Kitchen
- Reception-Dining Room
- Porter
- Two Lifts
- Lease To 2149

Allsop Place, London, NW1



Total area (approx): 70.98 sq m (764 sq. ft)