

Shroton Street, NW1

£800,000

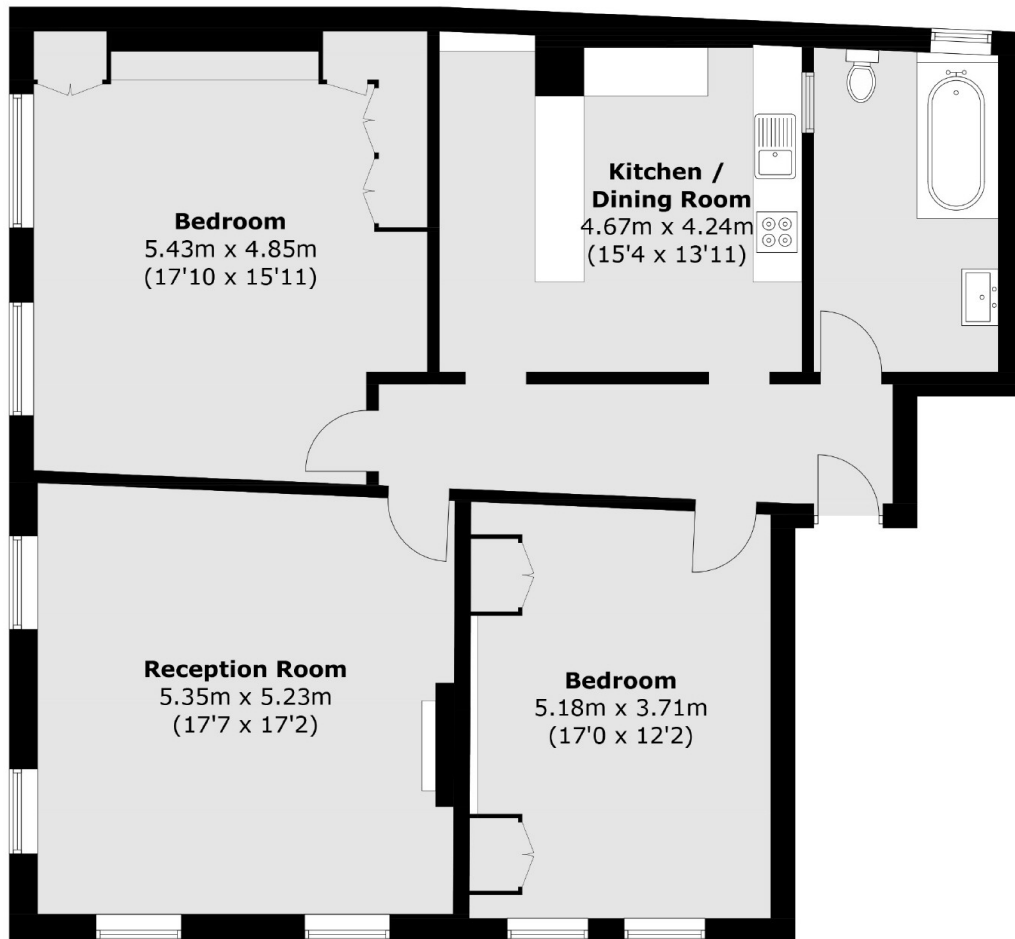
A bright apartment with two double bedrooms. Located on the top floor of an 1895 built building. The apartment occupies a prominent corner position and requires modernisation.

Located moments from Marylebone Road, Edgware Road and Baker Street Stations. The canal side amenities of Paddington Basin are a short walk away.

Features

- Two Double Bedrooms
- Reception Room
- Kitchen- Dining Room
- Top Floor Walk Up
- Lease 999 years from 1998
- 1206 square feet

Shroton Street, London, NW1



Third Floor

Total area (approx.): 112.1 sq. m (1206.6 sq. ft)