



Upper Montagu Street, W1H

£750 Per week

This modern one bedroom apartment is on the lower ground floor of an attractive Georgian building on Upper Montagu Street.

The building is close to the vibrant shops, bars, cafes and restaurants of Marylebone Village and the open spaces of Regent's Park. The nearest transport links are from Baker Street, Edgware Road, Bond Street and Marble Arch stations.

Features

- Lateral Apartment
- Modern Finish
- Private Terrace
- One Double Bedroom
- Bathroom & Shower Room
- Living/Dining Rooms



Upper Montagu Street, W1H

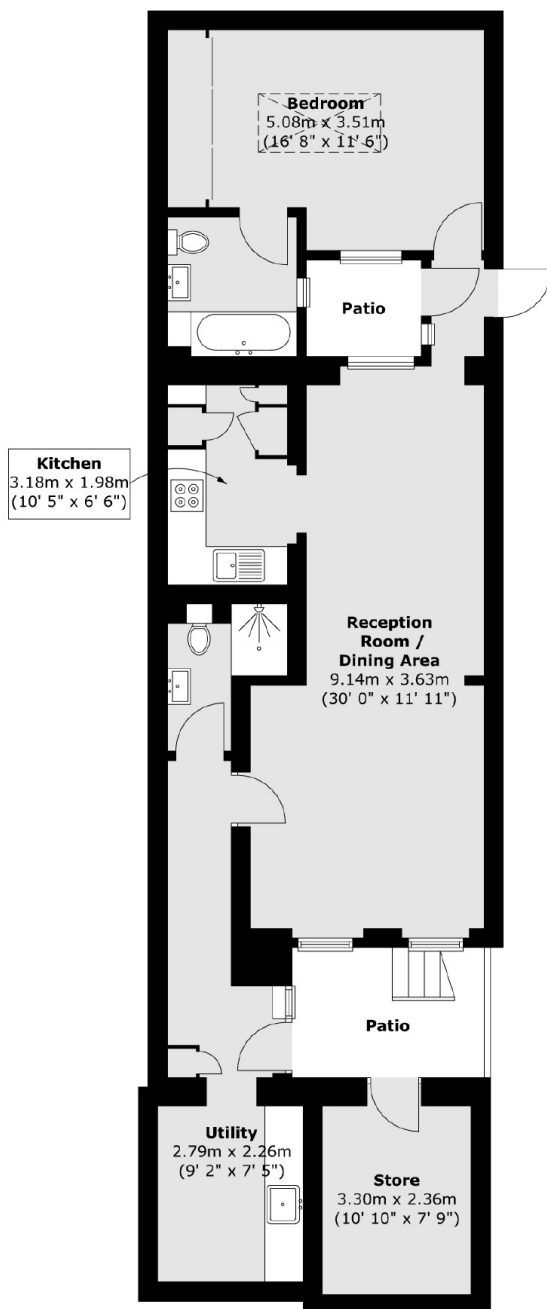
The property has a good sized reception room with plenty of space for both living and dining areas and a separate modern kitchen. There is a utility room off the hallway and a private patio area.

The bedroom is a good sized double room with a skylight providing lots of natural light, built-in storage and an en suite bathroom. There is a second shower room off the hallway.



Upper Montagu Street, London, W1H

Lower Ground Floor



Total area (approx.) : 80.7 sq. m (869 sq. ft)
Total store area (approx.) : 7.4 sq. m (79 sq. ft)
Total patio area (approx.) : 9 sq. m (97 sq. ft)