



Dorset Square, NW1

£445,000

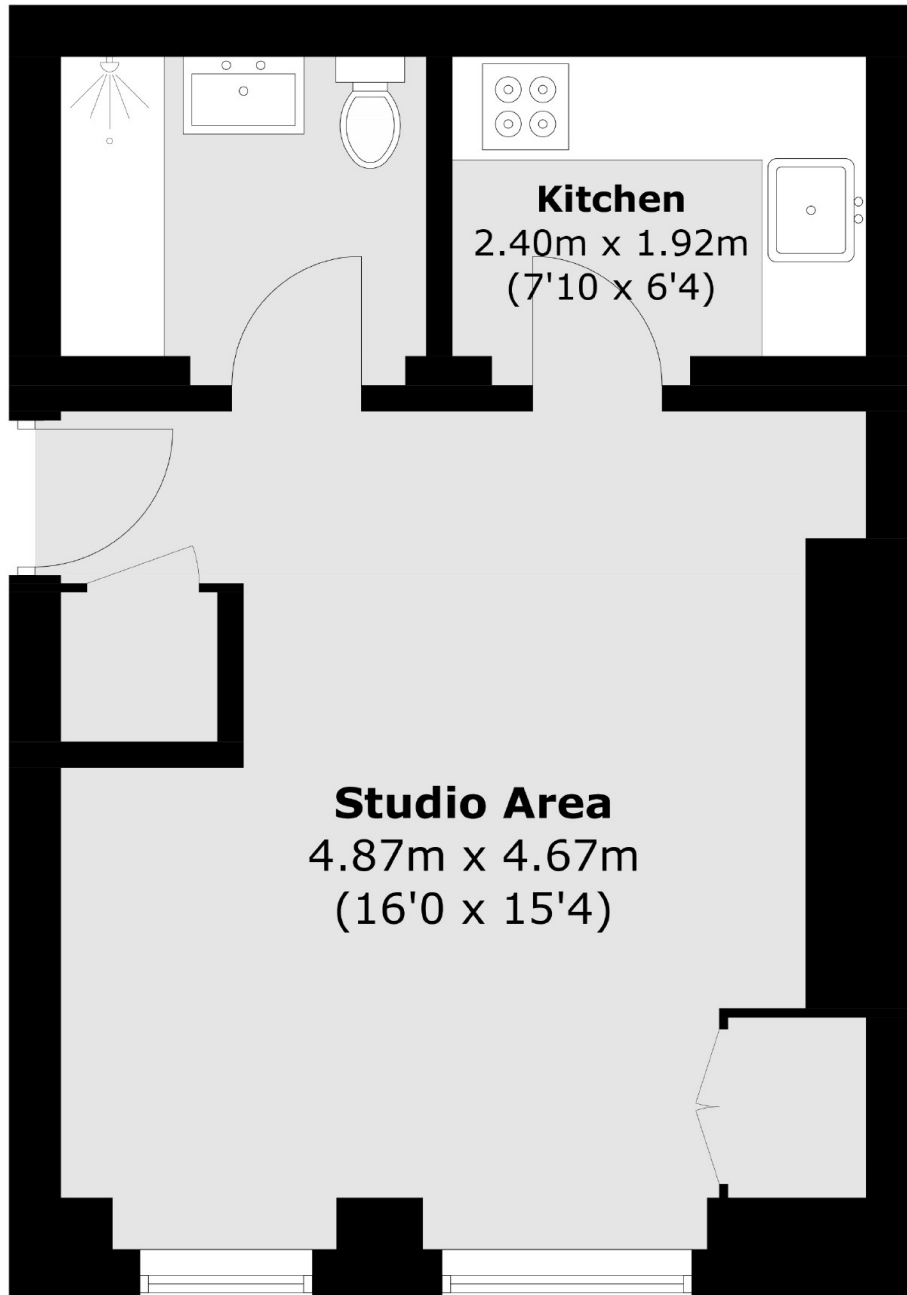
A contemporary styled studio apartment in a renovated period building facing Dorset Square.

Dorset Square is ideally located between Baker Street and Marylebone Stations, with superb transport links across London and beyond. Regent's Park and Marylebone High Street are both moments away.

Features

- London Square Location
- Subscription Access to Gardens
- Modern Finish
- Close to Transport Network
- Grade II Listed Building
- Prime Central London

Dorset Square, London, NW1



Total area (approx.): 32.5 sq. m (349.8 sq. ft)

Dexters

Marylebone
53-55 Weymouth Street
London
W1G 8NJ
Sales
020 7224 5544

Energy Rating: C. We aim to make our particulars both accurate and reliable. However they are not guaranteed; nor do they form part of an offer or contract. If you require clarification on any points then please contact us, especially if you're traveling some distance to view. Please note that appliances and heating systems have not been tested and therefore no warranties can be given as to their good working order.

 **RICS** | Regulated
Estate Agent
and Letting Agent

[dexters.co.uk](https://www.dexters.co.uk)