



## Luxborough Street, W1U

£1,200,000

A three bedroom apartment located in a period building close to Marylebone High Street and Paddington Gardens. Selling chain free with a long lease.

Located moments from Baker Street station and Regents Park.

### Features

First Floor Apartment  
Reception-Dining Room  
Separate Kitchen With Balcony  
Wooden Floors  
Remaining Lease 107 Years



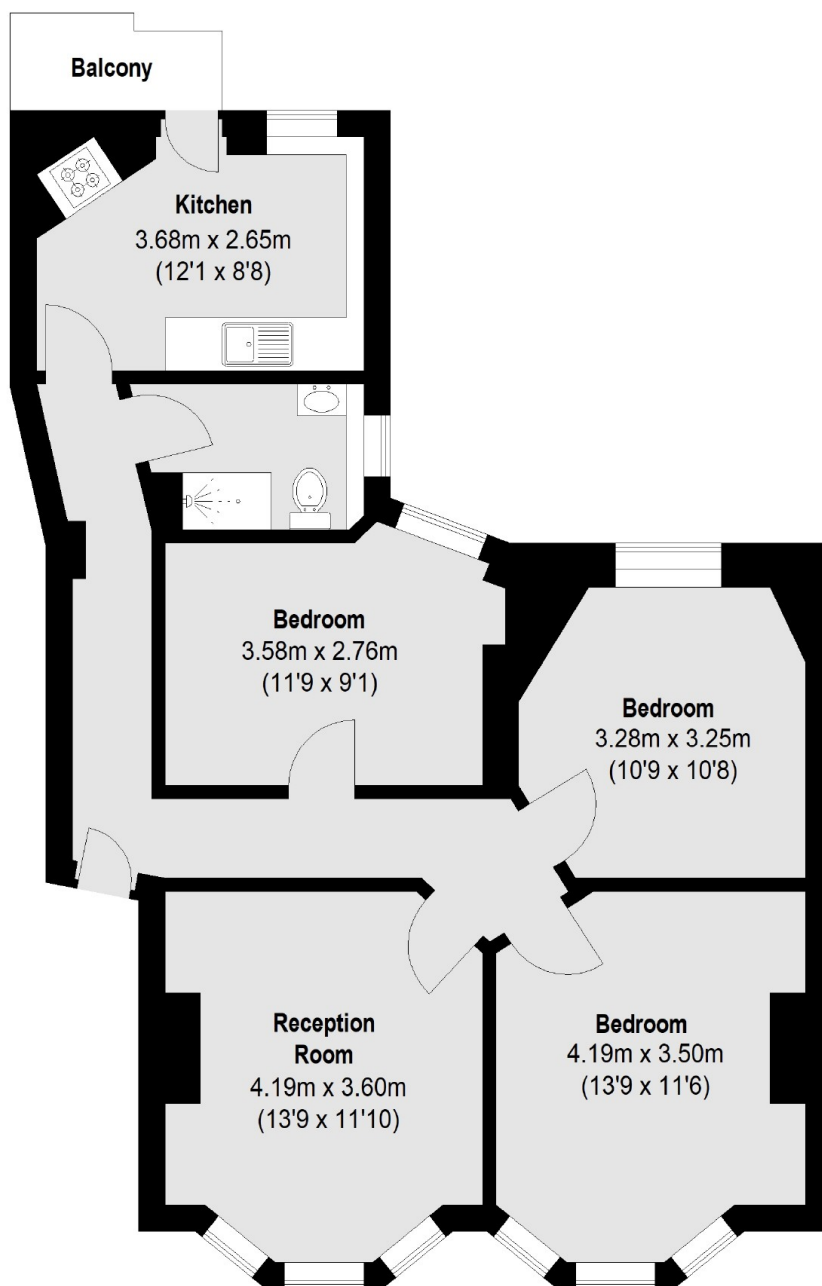
## Luxborough Street, W1U

With wooden floors, separate kitchen, reception room with space to dine, three double bedrooms with ample storage. Its prime location near transportation hubs, Regents Park, Hyde Park and the vibrant attractions of Marylebone Village, Oxford Street and Mayfair make it an ideal choice for those seeking a luxurious and convenient lifestyle in the heart of London.





# Luxborough Street, London, W1U



Total area (approx.): 76.66 sq. m (825 Sq. ft)  
Balcony: 2.44 sq. m (26 Sq. ft)