



## Gloucester Place, NW1

£1,495 Per week

A beautifully refurbished three bedroom apartment located on the first floor of this 1930's apartment block, moments from Baker Street.

There are numerous transport links from Marylebone, Baker Street, Regent's Park and Great Portland Street stations.

### Features

- Portered Building
- Brand New Refurb
- Private Terrace
- Two Receptions
- Three Bedrooms
- Two Bathrooms



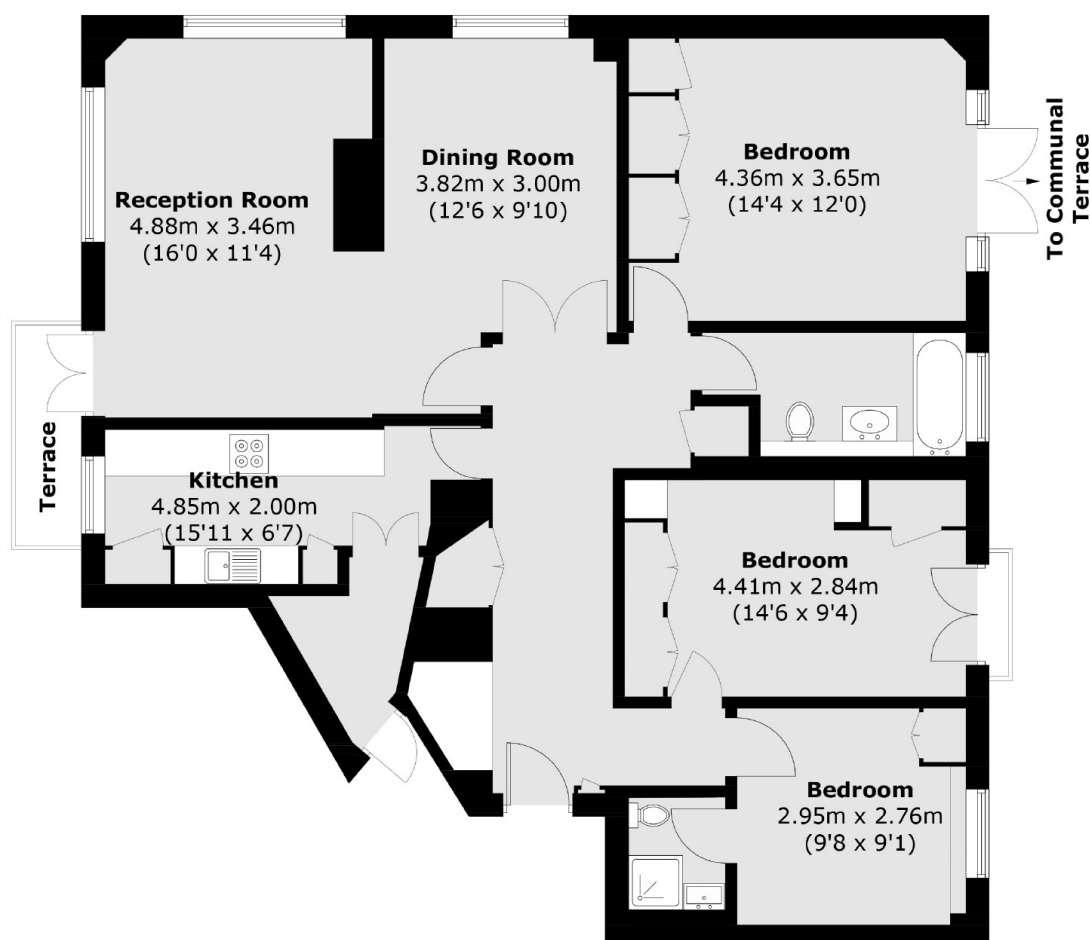
## Gloucester Place, NW1

The flat comes fully furnished and has a living room with doors onto a private terrace and an archway leading through to the dining room. There is a stylish kitchen off the hallway, three bedrooms with built-in storage and two bathrooms (one shower room).

The building is accessed via a grand art deco style canopied entrance from Gloucester Place. A carriage driveway allows residents to be collected and dropped off from the entrance. Residents are greeted by a team of uniformed porters who are on site 24-7 and two lifts leading to all floors.



# Gloucester Place, London, NW1



Total area (approx.): 107.6 sq. m (1158.2 sq. ft)  
Terrace : 2.4 sq. m (25.8 sq. ft)