



Craven Street, WC2N
£11,000,000

Dexters



Craven Street, WC2N

A significant Grade II listed townhouse situated between Covent Garden and the River Thames. Craven Street has been home to historical political and literary figures including Benjamin Franklin and Herman Melville. Further information will be provided upon request.

The house has been completely refurbished by the owners to an exacting specification. This large London home is arranged over seven floors with passenger lift access to six of the floors. The internal configuration is adaptable and provides extensive entertaining space.

Located in a quiet street providing residents pedestrian access to London's West End, The Palace of Westminster and The South Bank. Charing Cross and Embankment Stations are close by.

Features

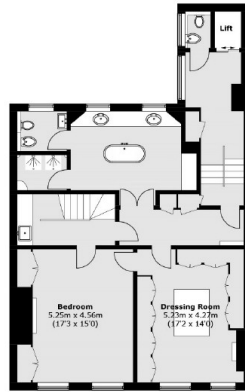
- Freehold House
- Potential For Six Bedrooms
- Parking with EV Charging Point
- Modern Passenger Lift
- CCTV and Sonos



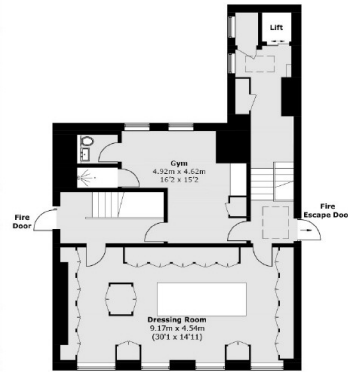




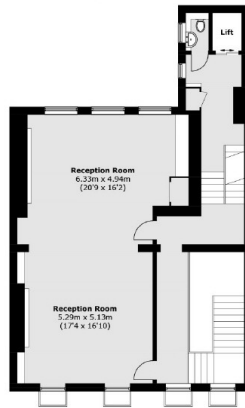
Craven Street, London, WC2N



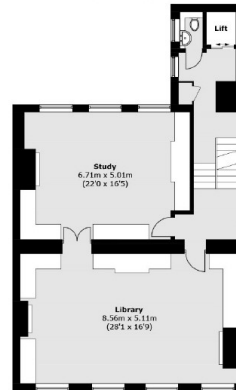
Third Floor



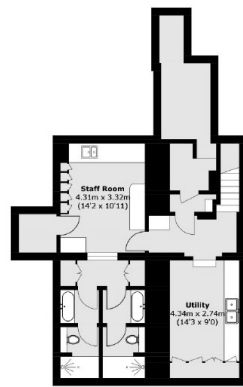
Fourth Floor



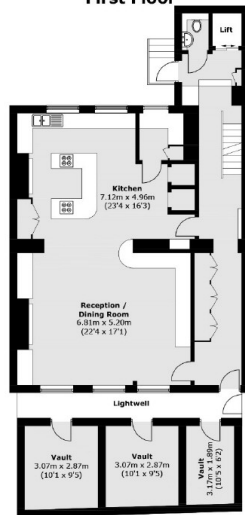
First Floor



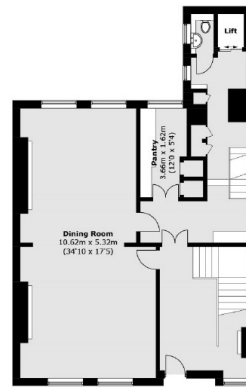
Second Floor



Basement



Lower Ground Floor



Ground Floor

Total area (approx.): 683.3 sq. m (7,354.9 sq. ft)
Vaults: 26.7 sq. m (287.4 sq. ft)