



## Fitzhardinge Street, W1H

### £4,500,000

A two level apartment located on the top floor of a Grade II listed building. With two double bedrooms en suite, two receptions and direct lift access. Hardwood floors and a modern finish complement the bright apartment.

Located between Manchester Square and Portman Square. The amenities of Oxford Street, Marylebone and Mayfair are easily accessible.

### Features

- Two Bedrooms En Suite
- Two Reception Rooms
- Direct Lift Access
- Top Floor
- Lease 999 from 2016



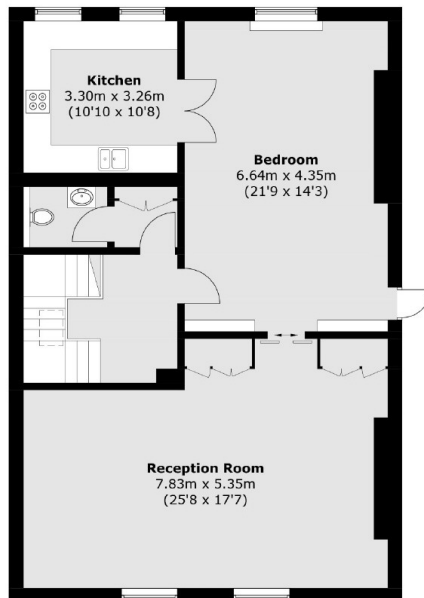
## Fitzhardinge Street, W1H

The lower floor is accessible by a passenger lift from the ground floor common entrance and is occupied by the double bedrooms both of which have fitted wardrobes and en suite bathrooms. A turning staircase leads to the upper landing with a guest cloakroom. There is a large dining room with double doors to the separate fitted kitchen. Further doors lead to the reception room.

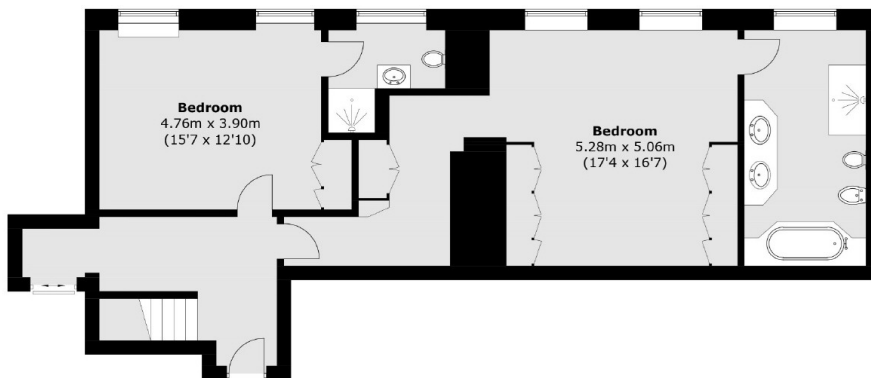




# Fitzhardinge Street, London, W1H



**Fourth Floor**



**Third Floor**

Total area (approx.): 187.1 sq. m (2,013.9 sq. ft)