



## Bryanston Square, W1H

£2,850 Per week

A lateral apartment on the fifth floor of a prestigious multi-entrance portered building on Bryanston Square.

Bryanston Square is considered one of London's most desirable Garden Squares, offering resident only gardens in the heart of central London. Both Hyde Park and Regent's Park are within easy reach, and Bond Street, Marble Arch and Baker Street stations are all close by.

### Features

- Garden Square
- Lift And Porter
- Fifth Floor Apartment
- Unfurnished
- Four Bedrooms
- Four Bathrooms



## Bryanston Square, W1H

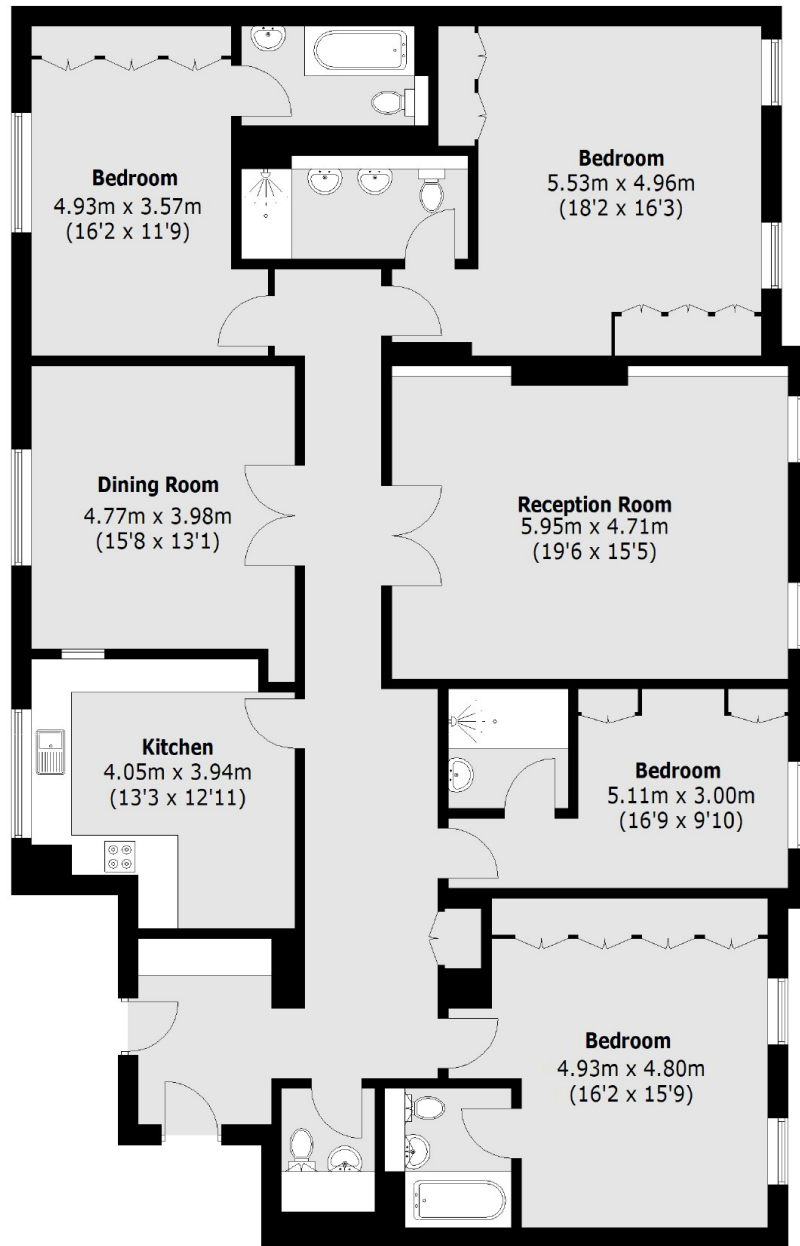
This modern flat benefits from over 2,000 sq ft of living space and has a good sized reception room with built-in shelving and storage, and a dining room. There is a separate kitchen with built-in appliances and a bar counter.

All four bedrooms are double rooms with en suites and built-in wardrobes, and there is a guest WC off the hallway.

The vibrant shops, bars, cafes and restaurants of Marylebone Village and Portman Village are a short walk away. Both a favourite with locals and tourists, providing a village vibe in the heart of central London.



# Bryanston Square, London, W1H



Total area (approx.): 189.7 sq. m (2,041.9 sq. ft)