



Harrowby Street, W1H

£2,395 Per week

A beautifully presented lateral apartment on the third floor of this portered block close to Hyde Park.

Harrowby Street is a short walk from Portman Village, which is home to a number of independent shops and cafes. The open spaces of Hyde Park are a short walk away and the nearest transport links can be found at Marble Arch and Edgware Road stations.

Features

- Newly Refurbished
- 24 Hour Porter
- Third Floor, With Lift
- Three Bedrooms
- Three Bathrooms & Guest WC
- Two Balconies



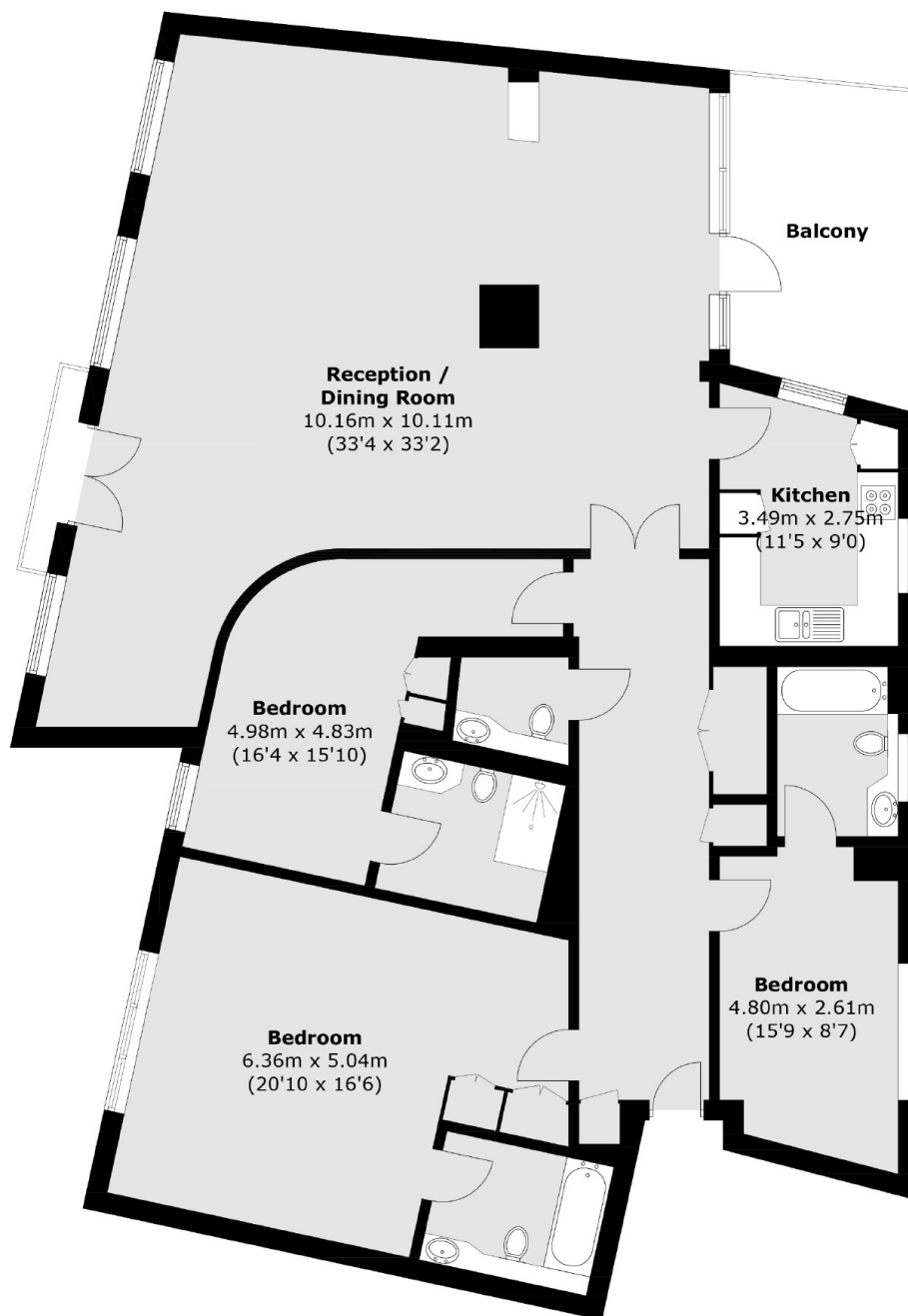
Harrowby Street, W1H

The flat has been refurbished throughout to create this stylish home which is being offered on a furnished basis. There is a large double reception room with doors leading onto a private balcony. The room has a double aspect with lots of natural light. The kitchen is off the reception and has built-in appliances and access to a balcony.

All three bedrooms are double rooms, two of which have built-in storage but all three have en suite shower/bathrooms. There is a guest WC off the hallway.



Harrowby Street, London, W1H



Total area (approx.): 175.4 sq. m (1,888.0 sq. ft)
Balcony: 12.1 sq. m (130.2 sq. ft)