



Park Road, NW8

£4,695 Per week

A newly decorated and fully furnished apartment on the second floor, with lift, of this portered block moments from Regent's Park.

The building is located opposite Regent's Park and there are numerous transport links from Baker Street, Marylebone and Great Portland Street stations. The boutique shops, bars and restaurants of Marylebone High Street are only a short walk away.

Features

- Newly Decorated
- Five Bedrooms
- Four Bathrooms
- Two Receptions
- 24 Hour Concierge
- Second Floor, With Lift



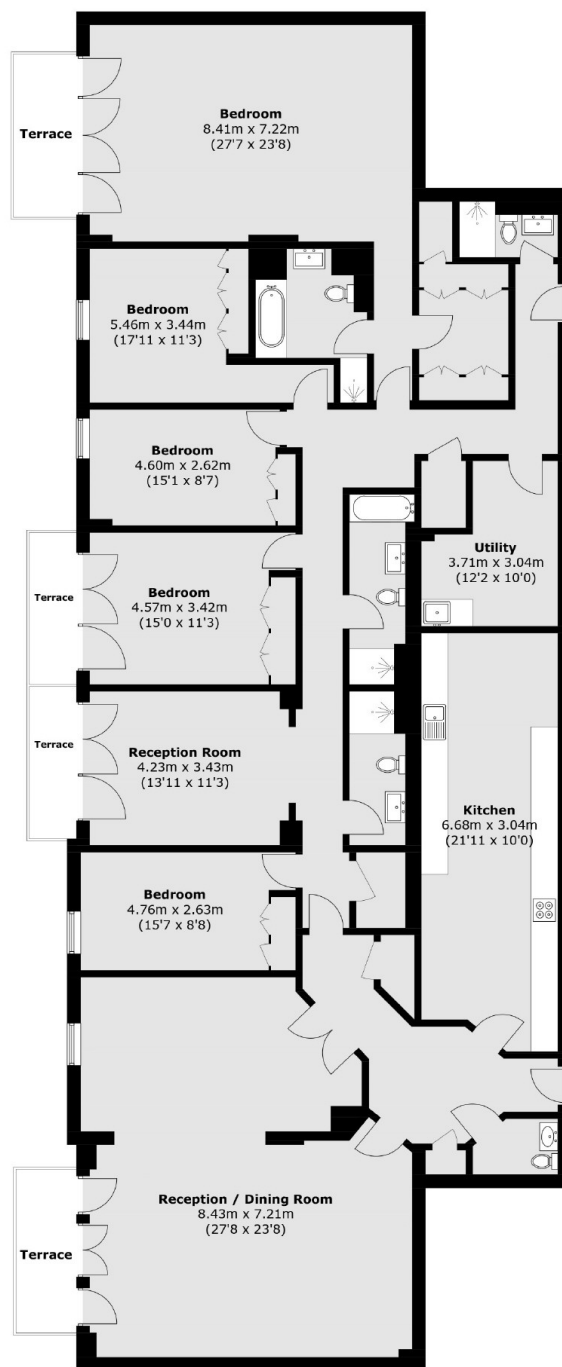
Park Road, NW8

The apartment has a principal reception room which is large enough for both living and dining areas and has doors leading onto a private terrace. There is a second reception room with doors onto a terrace, a separate eat-in kitchen, utility room and guest WC.

All five bedrooms are good sized double rooms with built-in storage and two of the rooms have access to terraces. There are three bath/shower rooms off the hallway whilst the main bedroom has an en suite bathroom.



Park Road, London, NW8



Total area (approx.): 288.5 sq. m (3,105.4 sq. ft)
Terrace area : 17.2 sq. m (185.1 sq. ft)