



## Molyneux Street, W1H

£450 Per week

This charming studio apartment is on the lower ground floor of an attractive period townhouse on Molyneux Street. The property is fully furnished, with a separate kitchen, shower room and a private patio garden.

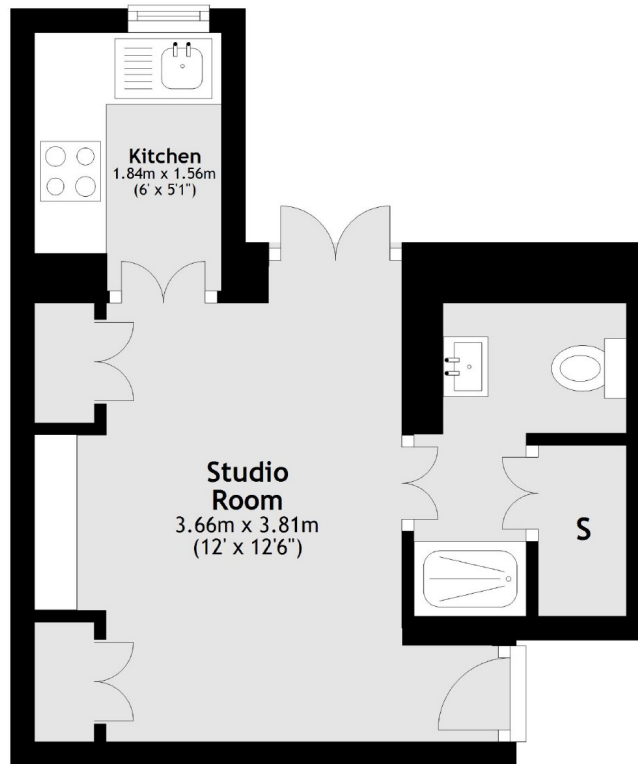
Molyneux Street is a short walk from Marble Arch, Edgware Road and Baker Street Underground stations. Portman Village close by, offering an array of independent boutiques, cafes and restaurants, and both Hyde Park and Regent's Park are within easy reach.

### Features

- Period Townhouse
- Studio Apartment
- Separate Kitchen
- Wood Flooring
- Private Terrace
- Fully Furnished

**Molyneux Street,  
London, W1H**

## Lower Ground Floor



Total area: approx. 20.7 sq. metres (223.1 sq. feet)