



Hallam Street, W1W

£800,000

A one bedroom apartment situated in a period apartment block with uniformed concierge. With a bright contemporary modern interior and a long lease.

Located between Portland Place and Great Portland Street, providing access to Marylebone Village, Regent's Park and the West End.

Features

- Two Lifts
- Uniformed 24hr Concierge
- Lease 940 Years from 1978
- Chain Free
- Close to Transport

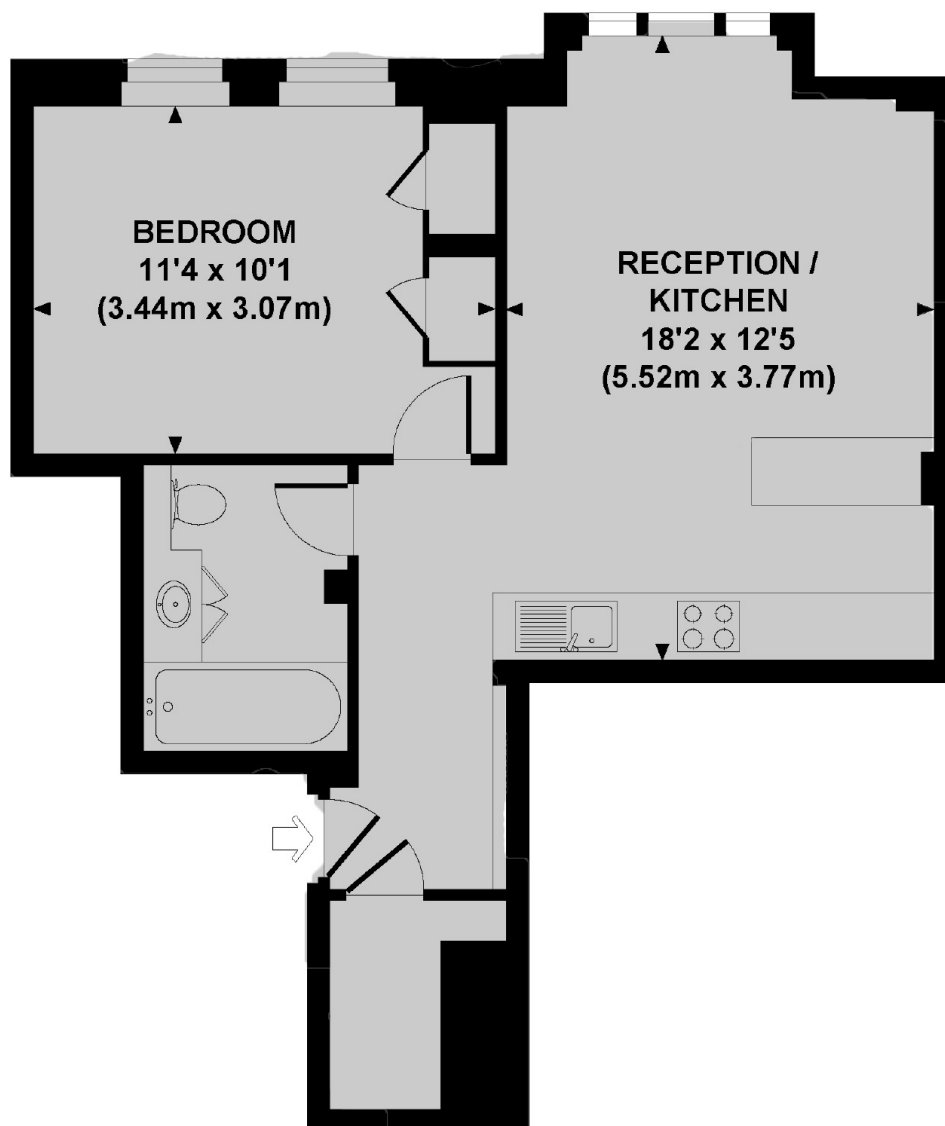


Hallam Street, W1W

Meticulously refurbished to an exceptional standard, this residence benefits from plenty of natural light. The property comprises a double bedrooms with storage, bathroom, open plan reception-kitchen. Additionally there is a large storage cupboard. B



Hallam Street, London, W1W



SECOND FLOOR

HALLAM STREET, W1W

Approx. gross internal area
486 Sq Ft. / 45.2 Sq M.