



## Devonshire Street, W1W

£795 Per week

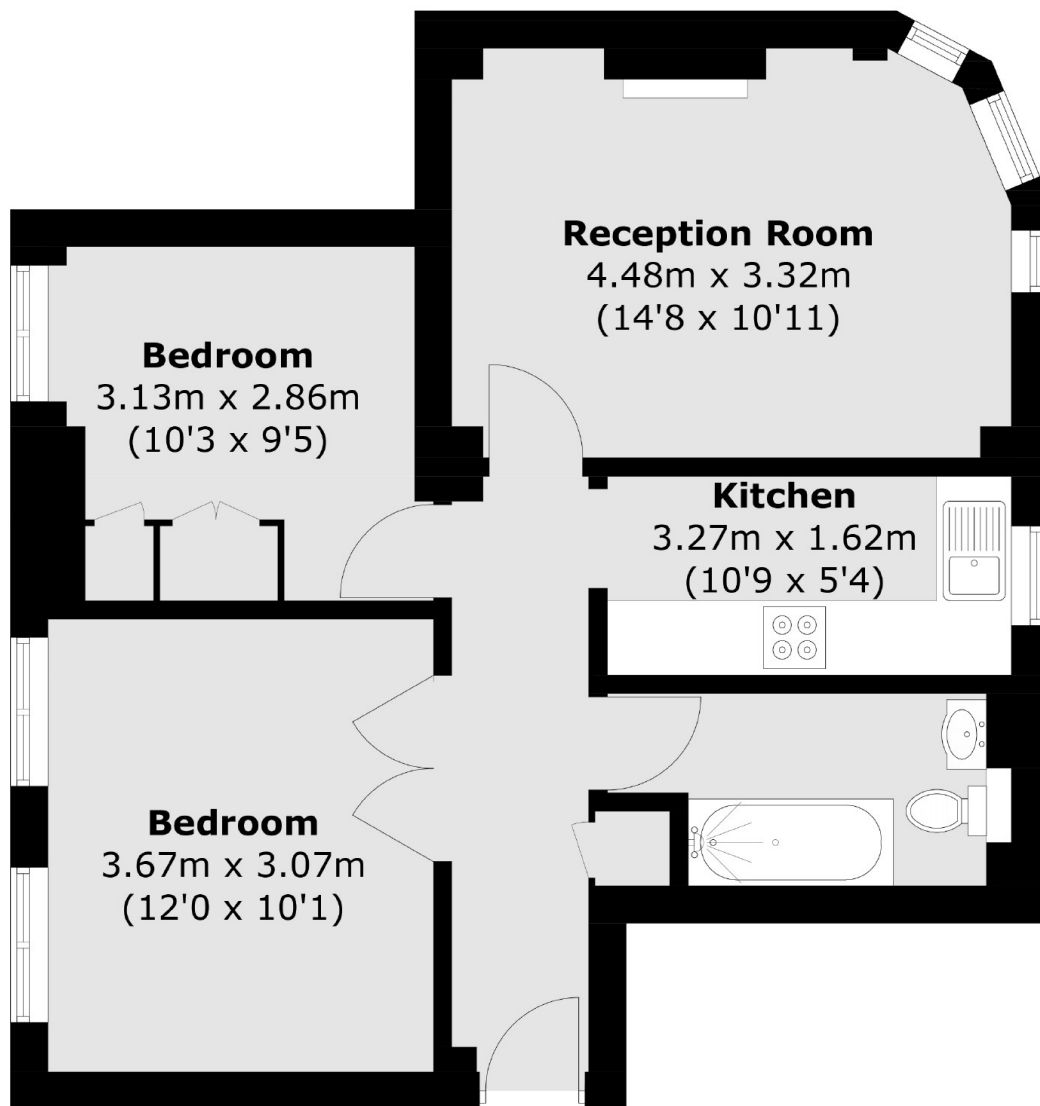
A lovely two bedroom apartment on the first floor, with lift, of this portered building on the corner of Hallam Street, close to Regent's Park. The flat has two double bedrooms, a good sized reception, separate kitchen and bathroom.

Goodwood Court is a short walk from the vibrant shops, bars, cafes and restaurants of both Marylebone and Fitzrovia. The open spaces of Regent's Park are within easy reach and there are numerous transport links from Great Portland Street, Baker Street, Regent's Park, Tottenham Court Road and Oxford Circus stations.

### Features

- Portered Building
- First Floor With Lift
- Two Bedrooms
- One Bathroom
- Separate Kitchen
- Great Location

# Devonshire Street, London, W1W



Total area (approx.): 53.3 sq. m (573.7 sq. ft)