



## Fitzhardinge Street, W1H £4,350,000

A lateral apartment with two double en suite bedrooms and two reception rooms located moments from Selfridges and Bond Street Station. Offered in turn key condition with hardwood floors and a neutral modern finish

Located between Manchester Square and Portman Square. The amenities of Oxford Street, Marylebone and Mayfair are easily accessible.

### Features

- Two En Suite Bedrooms
- Reception Room
- Dining Room
- Kitchen - Breakfast Room
- Passenger Lift
- 999 Years from 2016

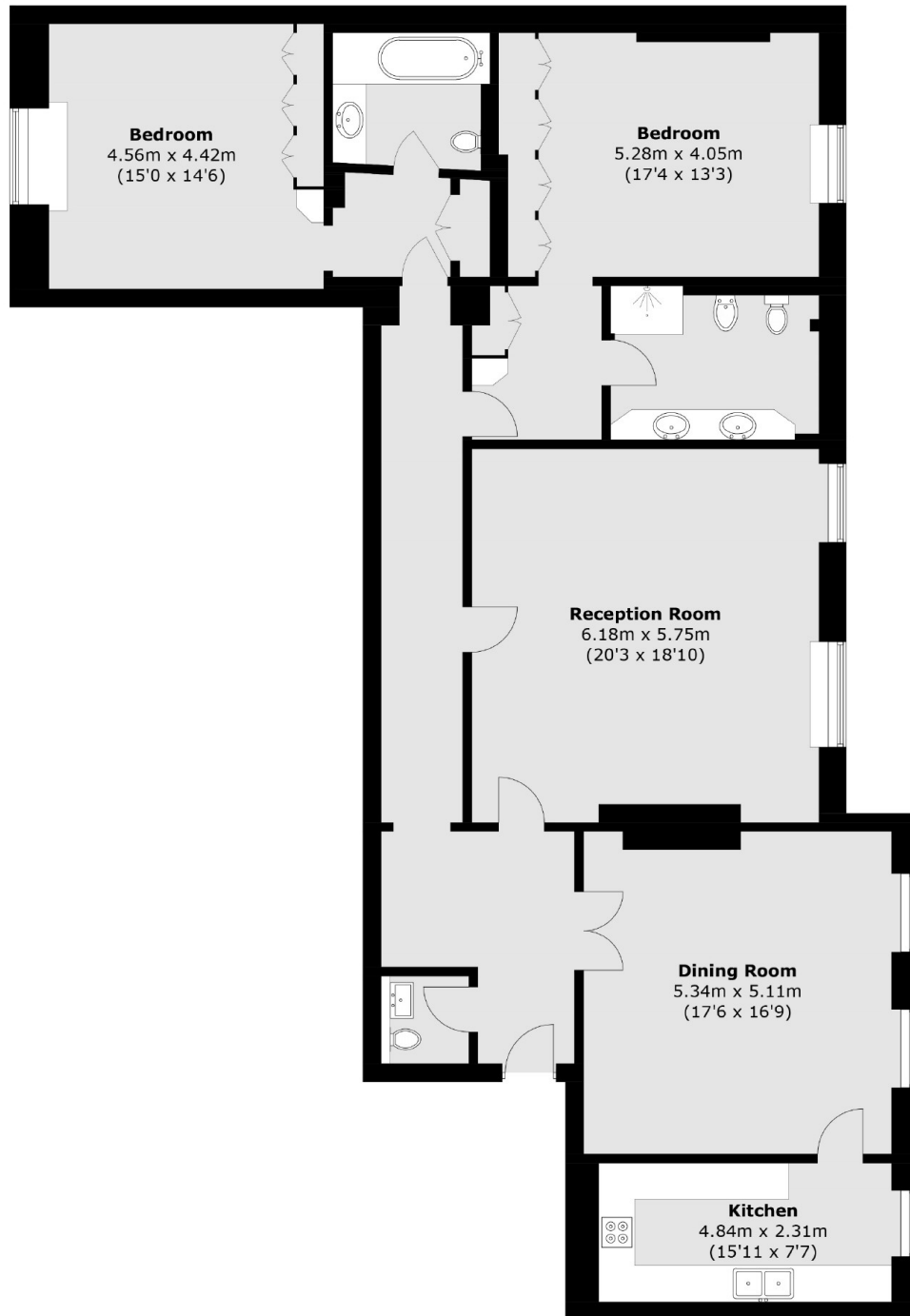


## Fitzhardinge Street, W1H

Arranged on one floor the rooms lead off a main hallway which has a guest cloakroom. Double doors lead to the dining room which has two windows overlooking the street and opens to a separate fitted kitchen with integrated appliances. There is a separate reception room. The bedrooms are located at the end of hallway and both have fitted wardrobes and en suite bathrooms.



Fitzhardinge Street,  
London, W1H



Total area (approx.): 173.9 sq. m (1,871.8 sq. ft)