



Conway Street, W1T

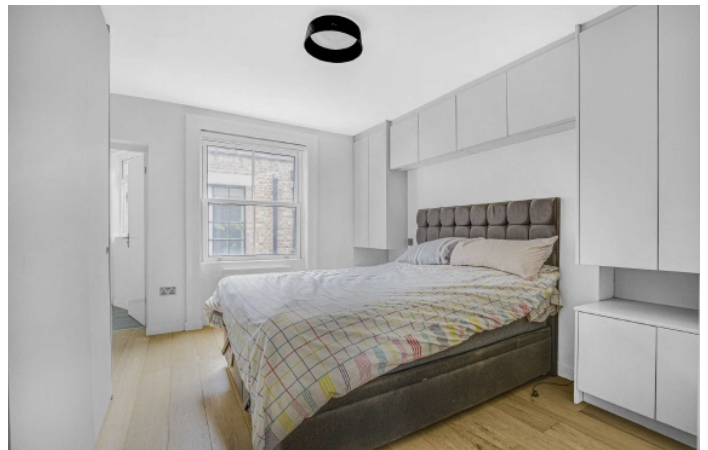
£600,000

A one bedroom conversion situated in a small period building south of Fitzroy Square. Conveniently located for transport links and the many culinary options that the Fitzrovia area has to offer.

Located close to Warren Street (Northern & Victoria lines) and Great Portland Street Underground stations (Hammersmith & City, Circle and Metropolitan lines). London Euston and St. Pancras International Station are nearby. It is also a short distance to Tottenham Court Road Station (The new Elizabeth Line, Northern and Central Lines).

Features

- One Bedroom
- Reception With Dining Area
- Modern Kitchen
- Shower Room
- Built In Storage
- Central Location

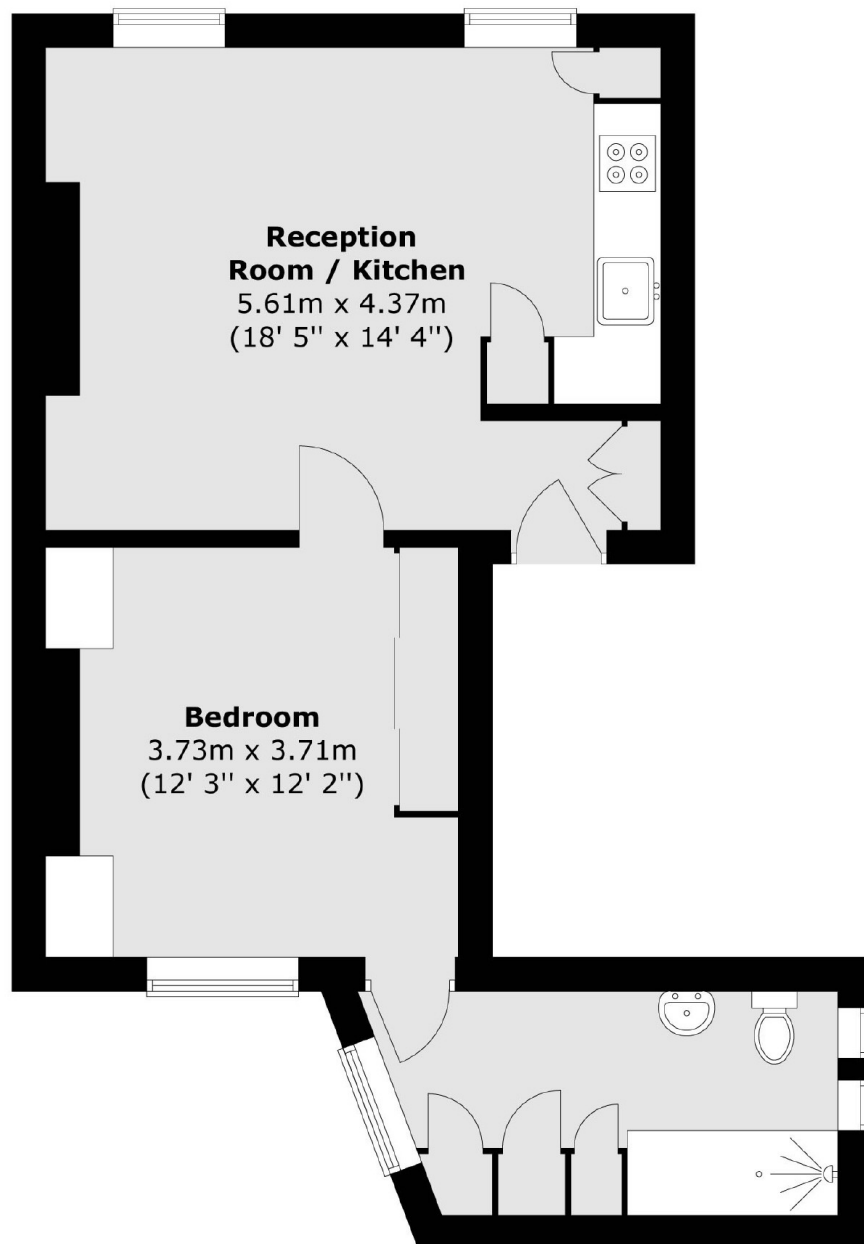


Conway Street, W1T

The second floor apartment has been comprehensively refurbished by the current owner and features a 18 ft combined reception-kitchen with space to dine, the double bedroom is located to the rear of the building and has an extensive range of built in wardrobes and cupboards, the room leads to the shower room with underfloor heating and a built in utility cupboard.



Conway Street, London, W1T



Total area (approx.) : 47.2 sq. m (508 sq. ft)