



## Marylebone Road, NW1

### £1,500,000

A two double bedroom, two bathroom apartment refurbished to a high standard in a Grade II listed Edwardian apartment block. The fifth floor apartment has a bright corner aspect, three balconies and is offered in excellent condition.

#### Features

- Edwardian Building
- Porter & Lift
- 999 year Lease
- Chain Free
- Three Balconies
- Double Glazed Windows

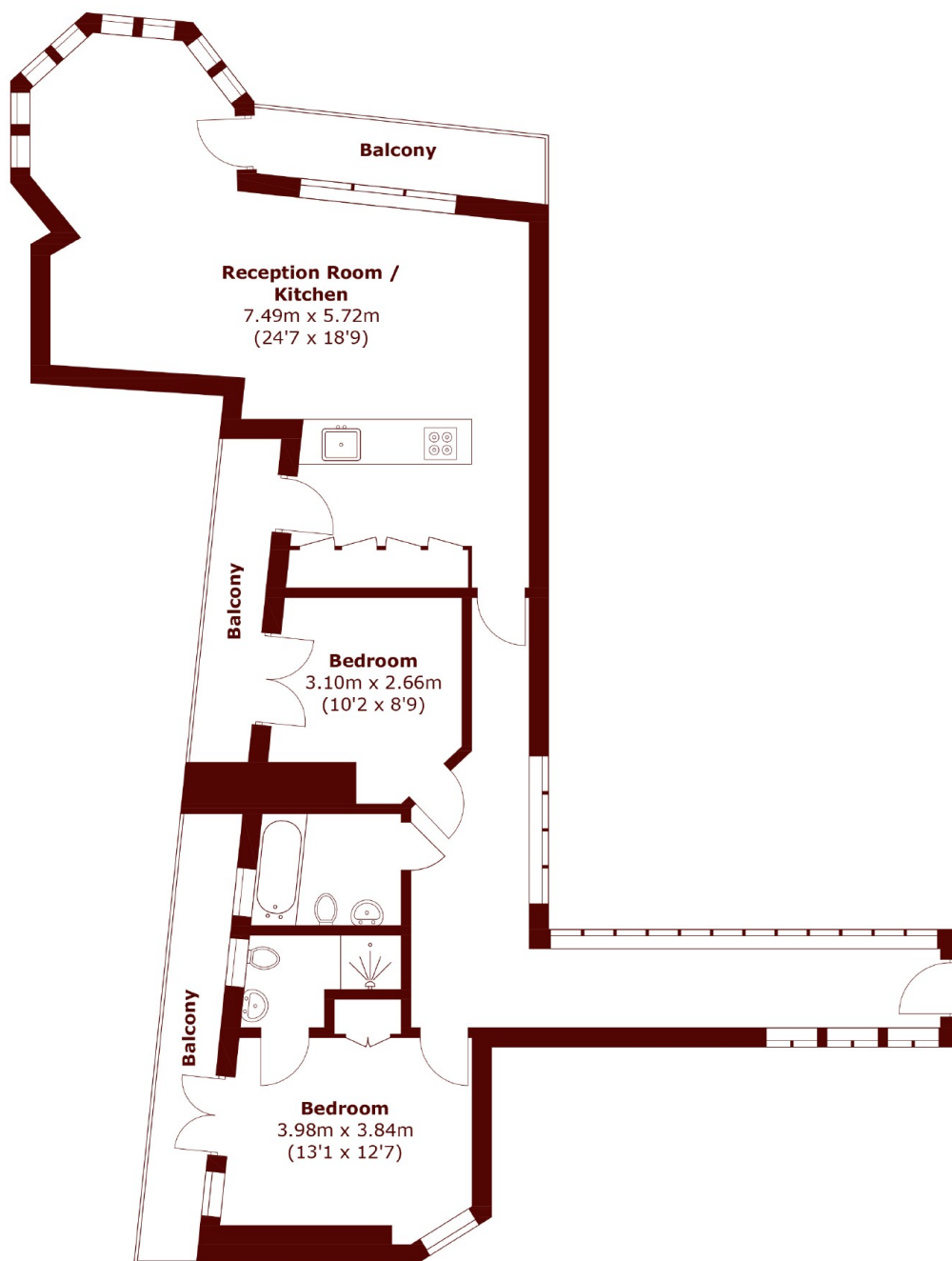


## Marylebone Road, NW1

Attractively located just west of Regent's Park, the fabulous apartment has a part glazed corridor and has been refurbished with double glazed windows, underfloor heating and ample storage. The main bedroom has two fitted wardrobes, a door to one of the balconies and opens to a an en-suite shower room, There is a second double bedroom with fitted storage and opens to a balcony, there is a second bathroom/guest cloakroom with a Japanese designed toilet. The kitchen features a bespoke stone worktop/breakfast bar, siemens appliances and opens to the reception and dining room. The room features bi fold windows and a hexagon shaped seating area which opening to one of the three balconies.



# Marylebone Road, London, NW1



Total area (approx.): 89.8sq. m (966.6 sq. ft)  
Balcony: 15.8 sq. m (170.1 sq. ft)