



Great Cumberland Place, W1H

£695 Per week

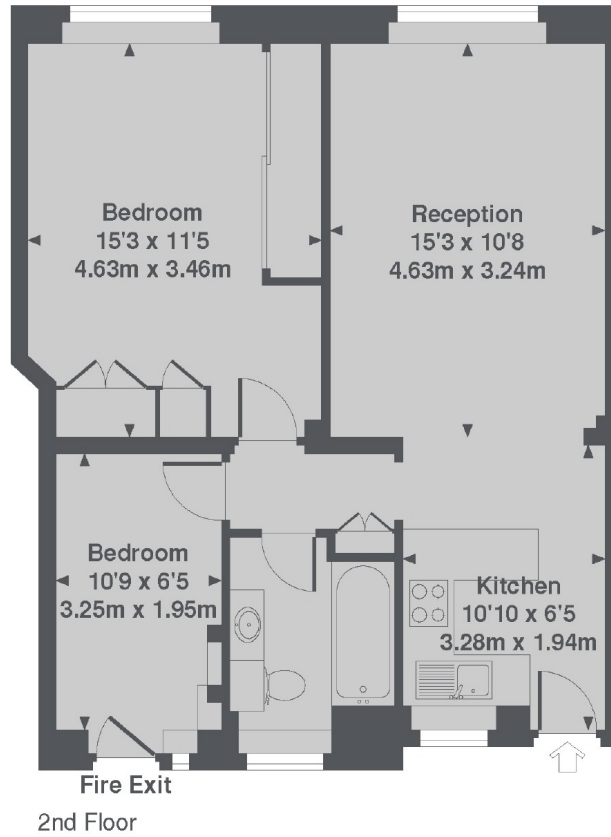
A two bedroom, one bathroom apartment on the second floor of a portered building with a lift. With wooden floors through out, natural light and an open-plan kitchen; the property is perfect for entertaining friends and family.

Cumberland Court is a block away from Marble Arch Station and round the corner from the boutique shops on New Quebec Street.

Features

- Two Bedrooms
- One Bathroom
- Wooden Floors
- Porter
- Lift
- Open-Plan Kitchen

Great Cumberland Place, London, W1H



Cumberland Court, W1H
Total Approx. Floor area 586 Sq. Ft. (54.5 Sq. M.)