



Hallam Street, W1W

£700 Per week

A well-presented one bedroom apartment on the third floor of this attractive and sought after portered mansion block, nestled between Marylebone and Fitzrovia.

Hallam Street is just off Portland Place and the property is just a short walk to Regent's Park and within half a mile from Great Portland Street underground station.

Features

- Third Floor
- Private Terrace
- One Bedroom
- Shower Room
- Separate Kitchen
- Lift And Porter



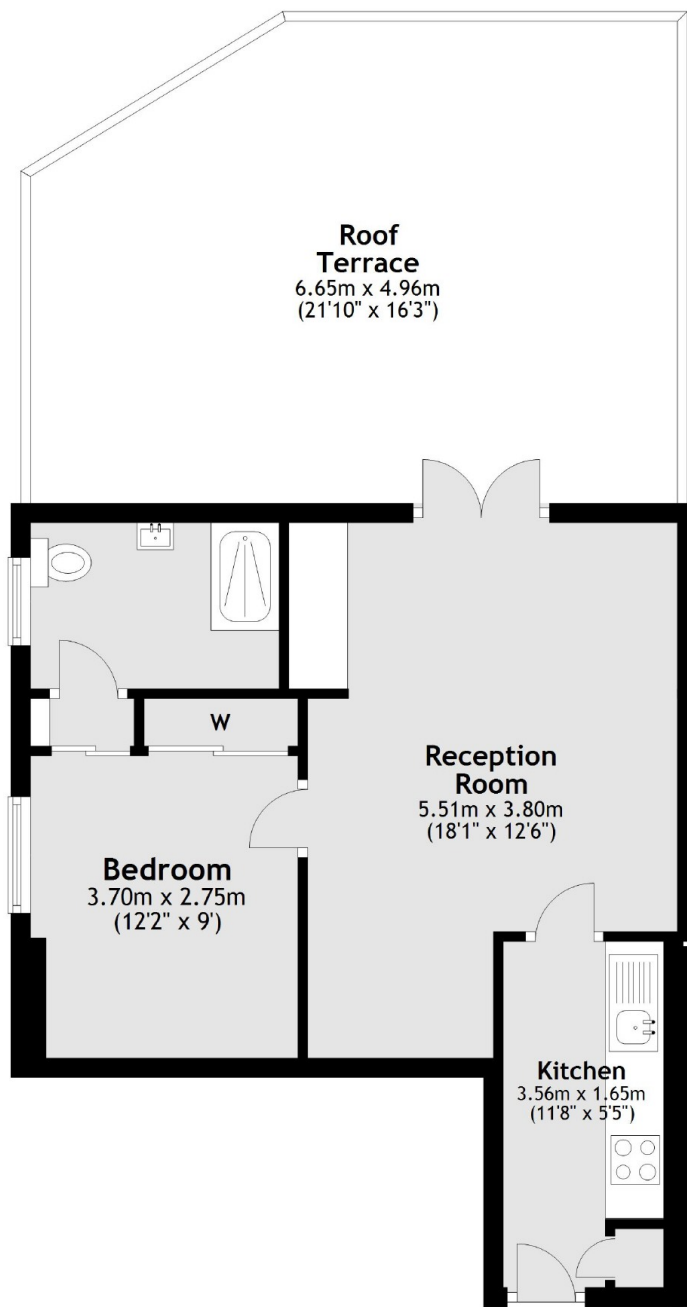
Hallam Street, W1W

The flat has a good sized reception room with plenty of space for living and dining areas, a separate kitchen, double bedroom with built-in storage, and a modern en suite shower room. Furthermore, there is a large private terrace accessed via the reception room.



Hallam Street,
London, W1W

Third Floor



Main area: Approx. 40.3 sq. metres (434.3 sq. feet)
Plus roof terrace, approx. 31.6 sq. metres (339.6 sq. feet)

Dexters

Marylebone
53-55 Weymouth Street
London
W1G 8NJ
Lettings
0207 224 5545

Energy Rating: E. We aim to make our particulars both accurate and reliable. However they are not guaranteed; nor do they form part of an offer or contract. If you require clarification on any points then please contact us, especially if you're traveling some distance to view. Please note that appliances and heating systems have not been tested and therefore no warranties can be given as to their good working order.

 **RICS** | Regulated
Estate Agent
and Letting Agent

dexters.co.uk