



Luxborough Street, W1U

£690,000

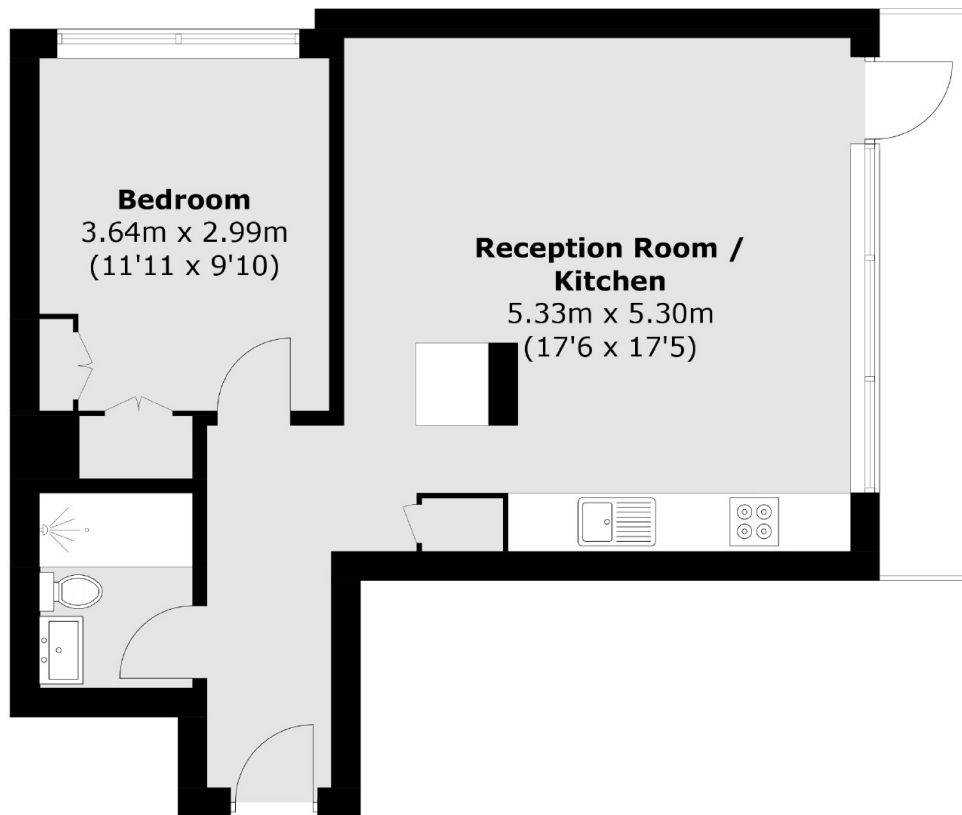
A one bedroom apartment with a south facing balcony offering panoramic views over London. Located in Luxborough Tower, a 1969 building with gated landscaped grounds.

Located next to the University of Westminster Marylebone Campus within walking distance of Baker Street station, Regents Park and Marylebone High Street.

Features

- One Bedroom
- Reception - Dining Room
- Open Kitchen
- 18th Floor with Lift
- Balcony

Luxborough Street, London, W1U



Total area (approx.): 49.5 sq. m (532.8 sq. ft)
External area (approx.): 5.4 sq. m (58.1 sq. ft)