



## Portman Square, W1H

£750 Per week

A one bedroom apartment on the eighth floor of a prestigious development on Portman Square. The apartment has an open-plan kitchen/reception room, a double bedroom with built-in storage and a modern bathroom.

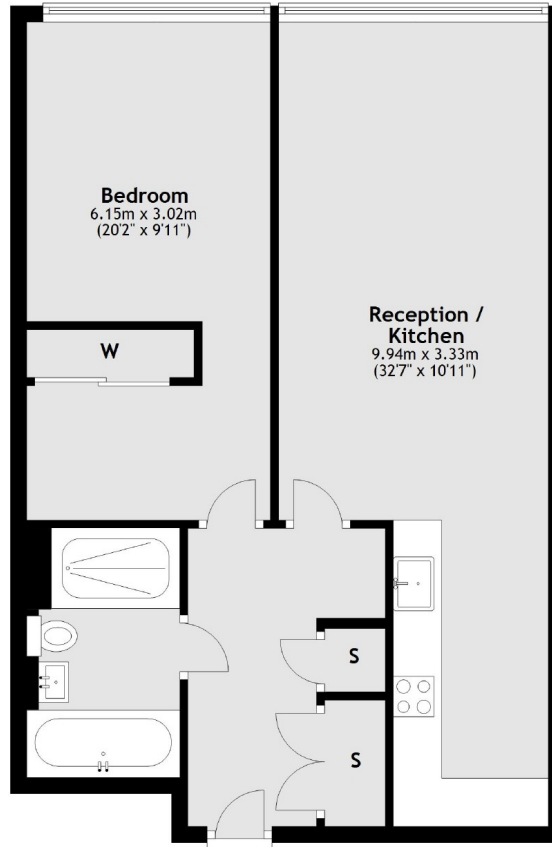
There are fantastic transport connections with Marble Arch and Bond Street Underground stations nearby. The open spaces of Hyde Park are only a short walk away.

### Features

Prestigious Garden Square  
Eighth Floor Apartment  
Lift And 24 Hour Security  
One Double Bedroom  
Open-Plan Reception  
Phone Entry System

# Portman Square, London, W1H

## Eighth Floor



Total area: approx. 62.1 sq. metres (668.2 sq. feet)