



Portman Square, W1H

£800 Per week

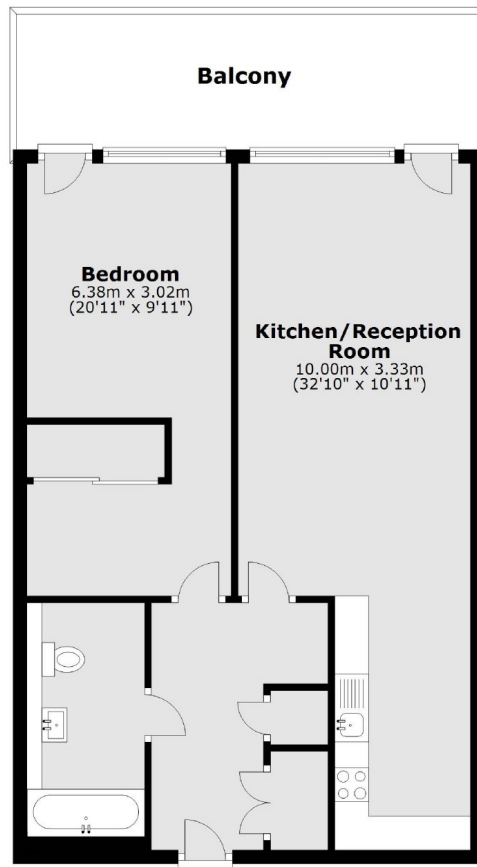
A luxury one bedroom apartment forming part of this prestigious development on Portman Square. The building has a lift and 24 hour security.

42 Portman Square sits close to The Portman Estate's New Quebec Street and Seymour Place, a favourite for locals, providing a village vibe in the heart of London. There are fantastic transport connections with Marble Arch and Bond Street Underground stations nearby. The open spaces of Hyde Park are only a short walk away.

Features

- Garden Square
- Lift And 24 Hour Security
- One Bedroom
- One Bathroom
- Unfurnished
- Private Balcony

Portman Square, London, W1H



Main area: Approx. 66.3 sq. metres (713.1 sq. feet)
Plus balconies, approx. 14.4 sq. metres (154.6 sq. feet)