



Harley Place, W1G

£2,250 Per week

A modern three-bedroom mews house arranged over three floors with a bespoke kitchen, underfloor heating and an integral garage. The property has been decorated with great care and attention to detail, creating a stylish and luxurious home.

Just a short walk away is Marylebone High Street, lined with traditional pubs, beautiful boutiques and shops, and hosting a farmers' market every Saturday. Bond Street and Oxford Circus stations are within easy reach.

Features

- Mews House
- Three Bedrooms
- Two Bathrooms
- Underfloor Heating
- Terrace
- Integral Garage



Harley Place, W1G

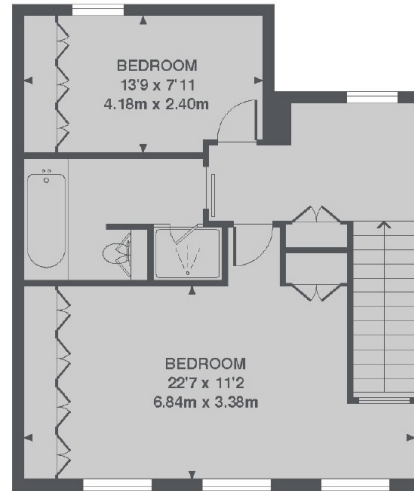
On the ground floor you have an open-plan kitchen/reception room with built-in appliances, marble worktops, LED lighting and an exposed brick wall adding to the stylish design of the property.

On the first floor the glass doored terrace is perfect for al fresco dining, there is a second reception room with wood flooring and an en suite double bedroom with built-in storage.

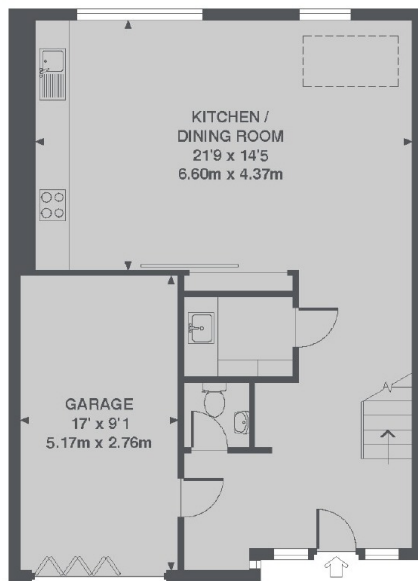
There are two further double bedrooms with built-in storage on the top floor, and a modern bathroom with separate shower. The property has a further guest WC on the ground floor.



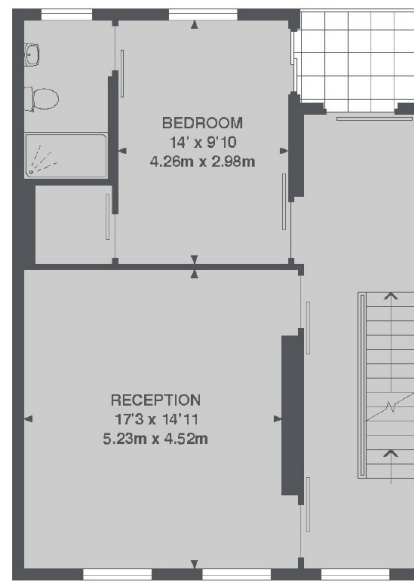
Harley Place, London, W1G



2ND FLOOR



GROUND FLOOR



1ST FLOOR

TOTAL APPROX. FLOOR AREA 1910 SQ. FT. (177.4 SQ. M.)