



Montagu Street, W1H

£875 Per week

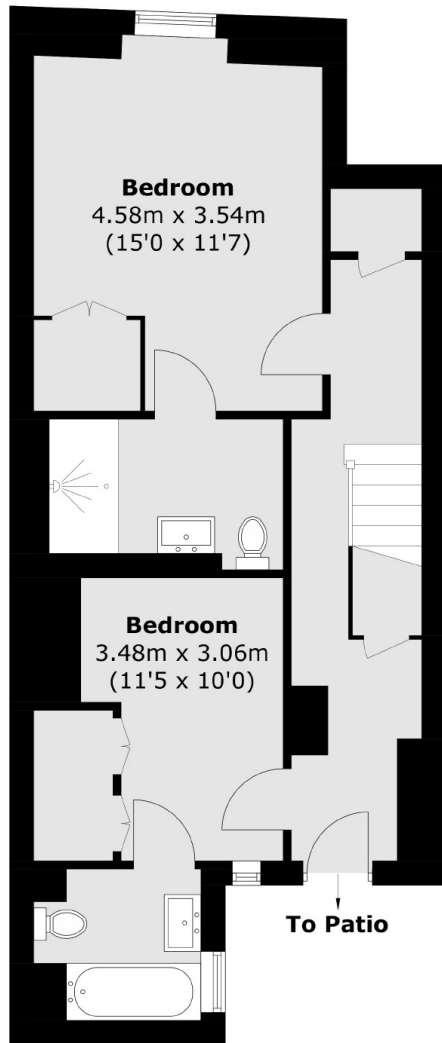
A two bedroom apartment arranged over the ground and lower ground floors of a Georgian conversion on Montagu Street. The property has a good sized reception, separate kitchen, two en suite bedrooms, guest WC and a courtyard garden.

Montagu Street is just south of Montagu Square, and within easy reach of Marble Arch and Hyde Park. The vibrant shops, bars and restaurants of Marylebone High Street are close by.

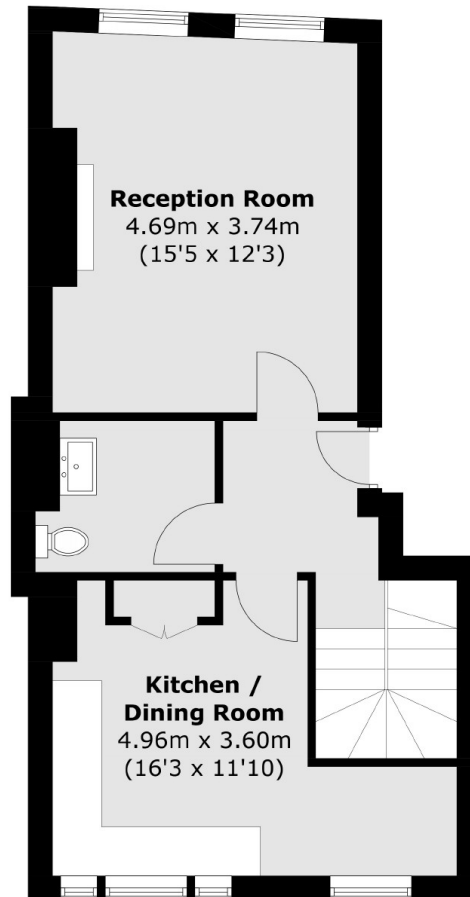
Features

- Georgian Conversion
- Two Bedrooms
- Two Bathrooms
- Guest Cloakroom
- Private Patio
- The Portman Estate

Montagu Street, London, W1H



Basement



Ground Floor

Total area (approx.): 93.9 sq. m (1,010.9 sq. ft)