



Montagu Street, W1H

£650 Per week

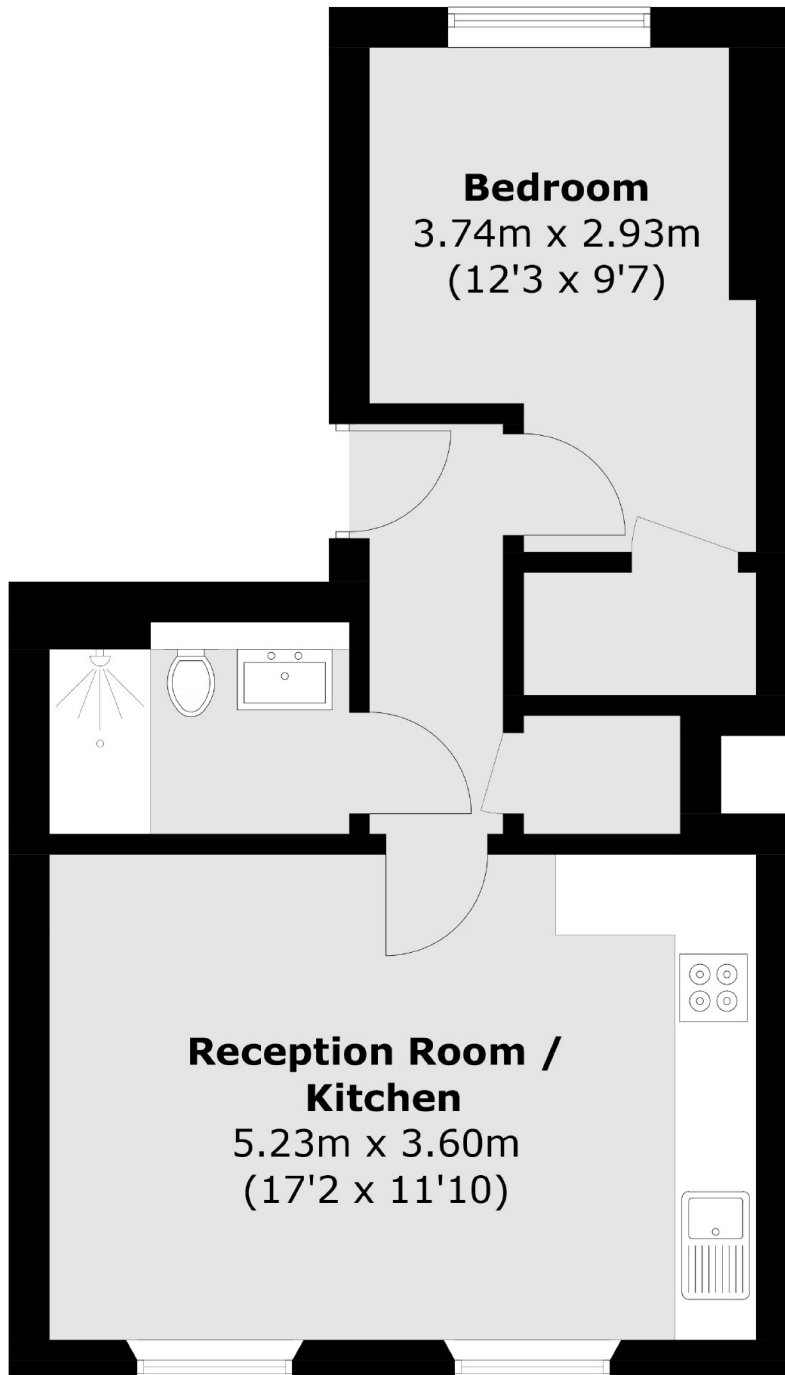
A one bedroom, one bathroom apartment on the third floor of this Georgian conversion close to Montagu Square. The flat has an open-plan kitchen/reception, double bedroom and shower room.

Montagu Street is just south of Montagu Square, and within easy reach of Marble Arch and Hyde Park. The vibrant shops, bars and restaurants of Marylebone High Street are close by.

Features

Third Floor
One Bedroom
Shower Room
Open-Plan
Unfurnished
The Portman Estate

Montagu Street, London, W1H



Total area (approx.): 39.5 sq. m (425.1 sq. ft)