

## Portman Square, W1H

£925 Per week

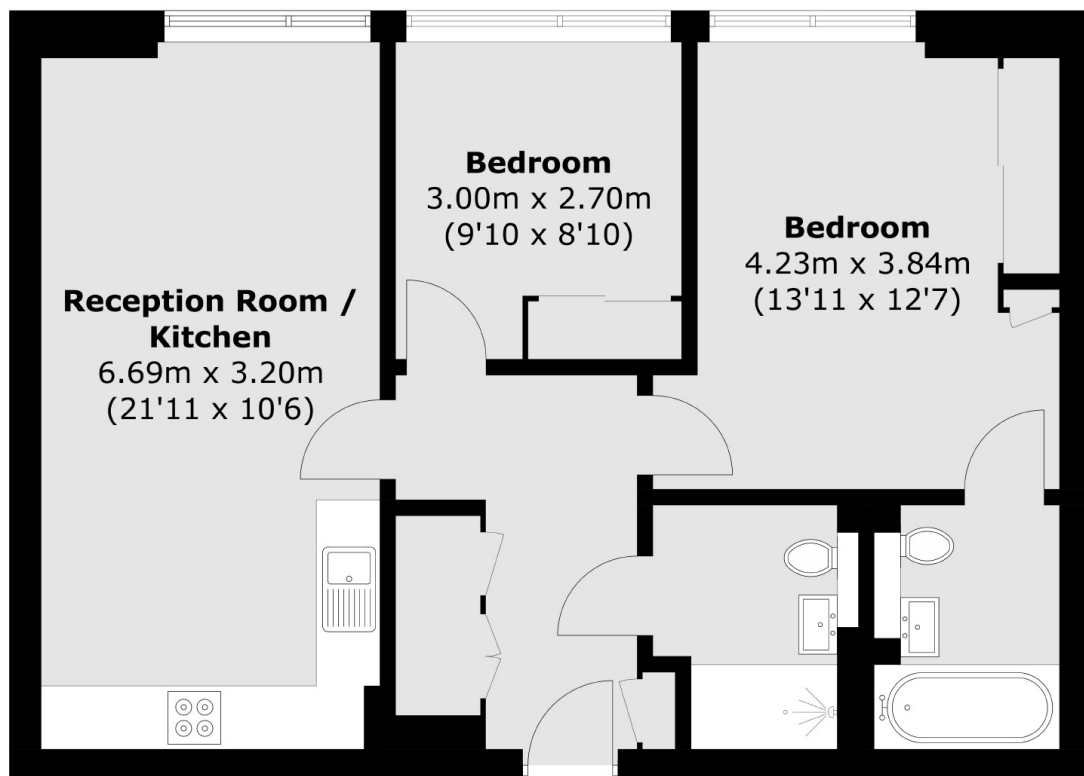
A luxury two bedroom apartment forming part of this prestigious development on Portman Square. The building has a lift and 24 hour security.

42 Portman Square sits close to The Portman Estate's New Quebec Street and Seymour Place, a favourite for locals, providing a village vibe in the heart of London. There are fantastic transport connections with Marble Arch and Bond Street Underground stations nearby. The open spaces of Hyde Park are only a short walk away.

### Features

- Garden Square
- Lift And 24 Hour Security
- Two Bedrooms
- Two Bathrooms
- Kitchen/Reception
- Unfurnished

# Portman Square, London, W1H



Total area (approx.): 64.5 sq. m (694.3 sq. ft)