



## Upper Berkeley Street, W1H

£1,500 Per week

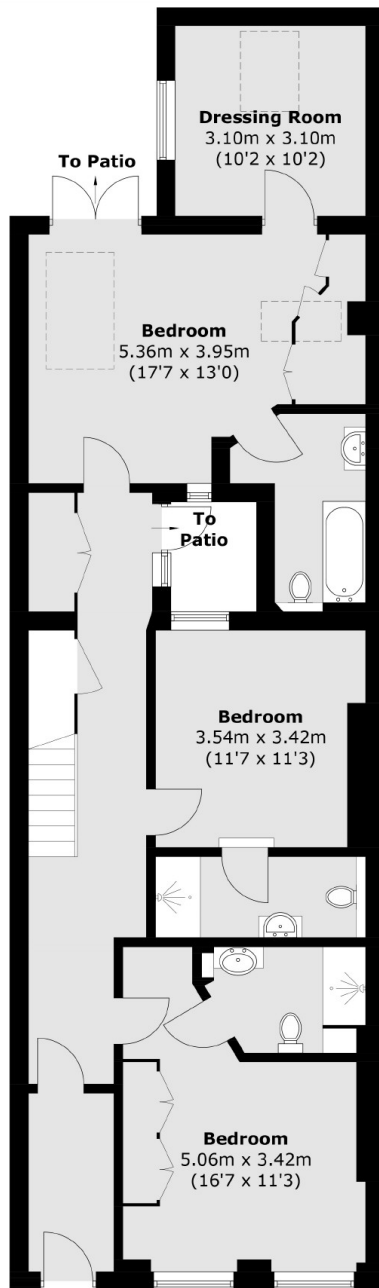
Arranged over two floors with high ceilings and modern specification throughout. The flat has a large reception leading through to the eat-in kitchen and utility room, there is a guest WC on the same floor and access to a private terrace. All three bedrooms are double rooms and there are three bathrooms and a further patio garden.

Upper Berkeley Street is a short walk from Portman Village, home to a variety of independent coffee shops and restaurants. The open spaces of Hyde Park are nearby and there are great transport links from Marble Arch, Bond Street and Baker Street stations.

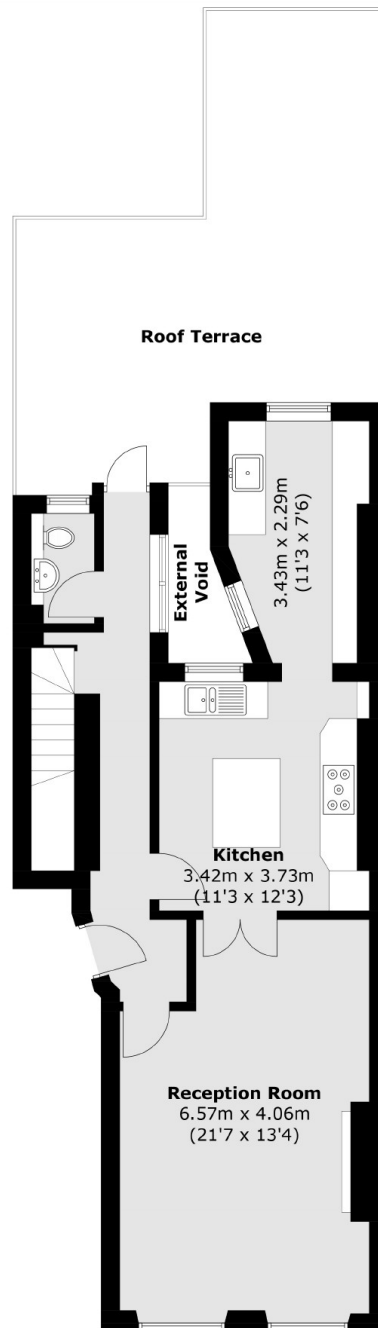
### Features

- Duplex Apartment
- Outside Terrace
- Three Bedrooms
- Three Bathrooms
- Unfurnished
- The Portman Estate

# Upper Berkeley Street, London, W1H



**Lower Ground Floor**



**Ground Floor**

Total area (approx.): 160.9 sq. m (1,731.9 sq. ft)  
Roof Terrace (approx.): 32.2 sq. m (346.6 sq. ft)