



Stourcliffe Street, W1H

£900 Per week

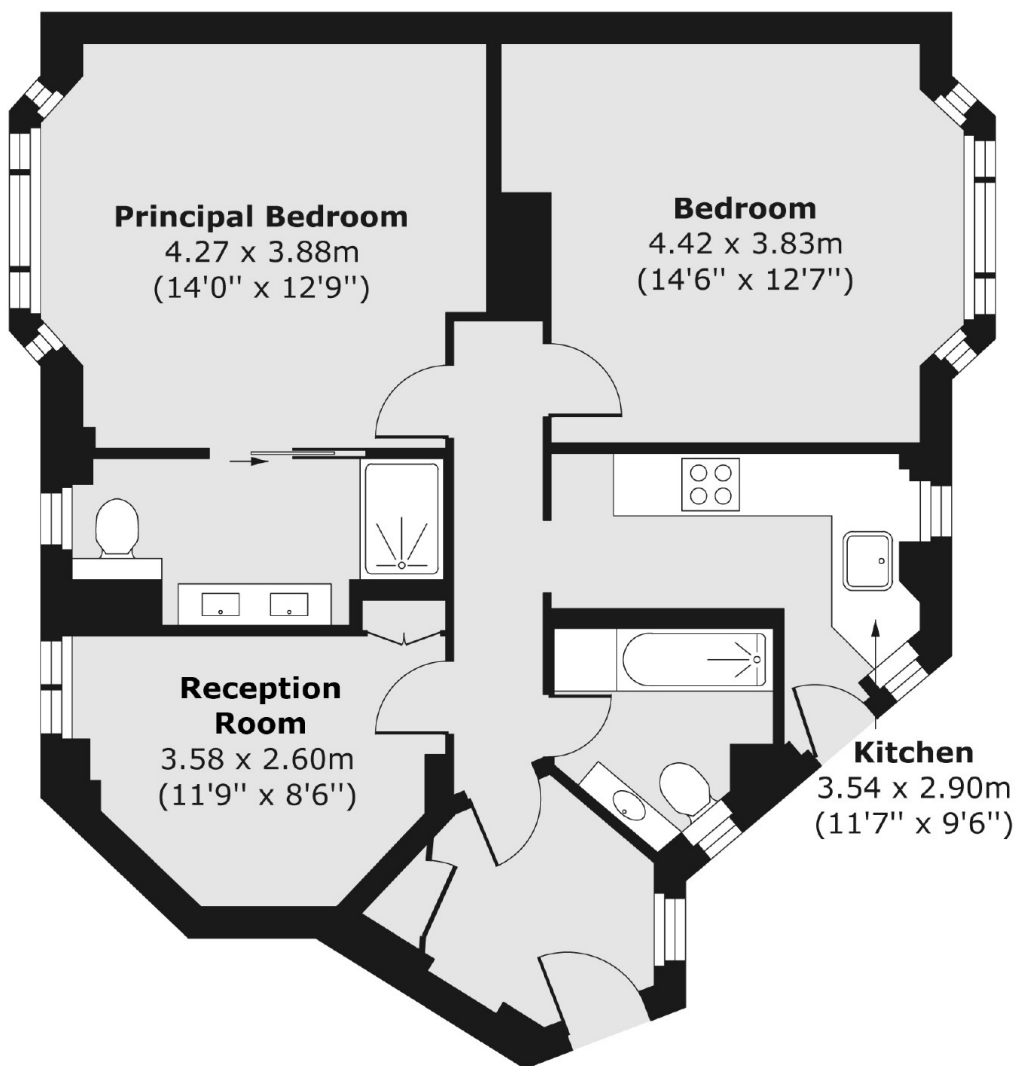
A modern two bedroom apartment within a purpose built block close to Hyde Park. The property has two double bedrooms, two bathrooms, separate kitchen and reception room.

The open spaces of Hyde Park are within easy reach and the closest transport links are from Edgware Road, Marble Arch and Bond Street stations. The shops, bars, cafes and restaurants of both Portman Village and Marylebone Village are a short walk away.

Features

Modern Throughout
Two Bedrooms
Two Bathrooms
Separate Kitchen
Reception
Furnished

Stourcliffe Street, London, W1H



Total area (approx.) 66.27 sq. m (713 sq. ft)