



Bryanston Square, W1H

£2,500,000

A beautifully presented top floor apartment with two double bedrooms, two bathrooms and a study. Located in an attractive Georgian building on Bryanston Square where residents have access to the attractive gardens.

Bryanston Square is considered one of London's most desirable Garden Squares, offering resident's exclusive access of private gardens in the heart of central London. The open spaces of Hyde Park and Regent's Park are a short walk away and there are transport links from Bond Street, Marble Arch and Baker Street stations.

Features

- Top Floor Apartment
- Passenger Lift
- Two Double Bedrooms
- Study/Occasional Bedroom
- Two Bathrooms
- Long Lease

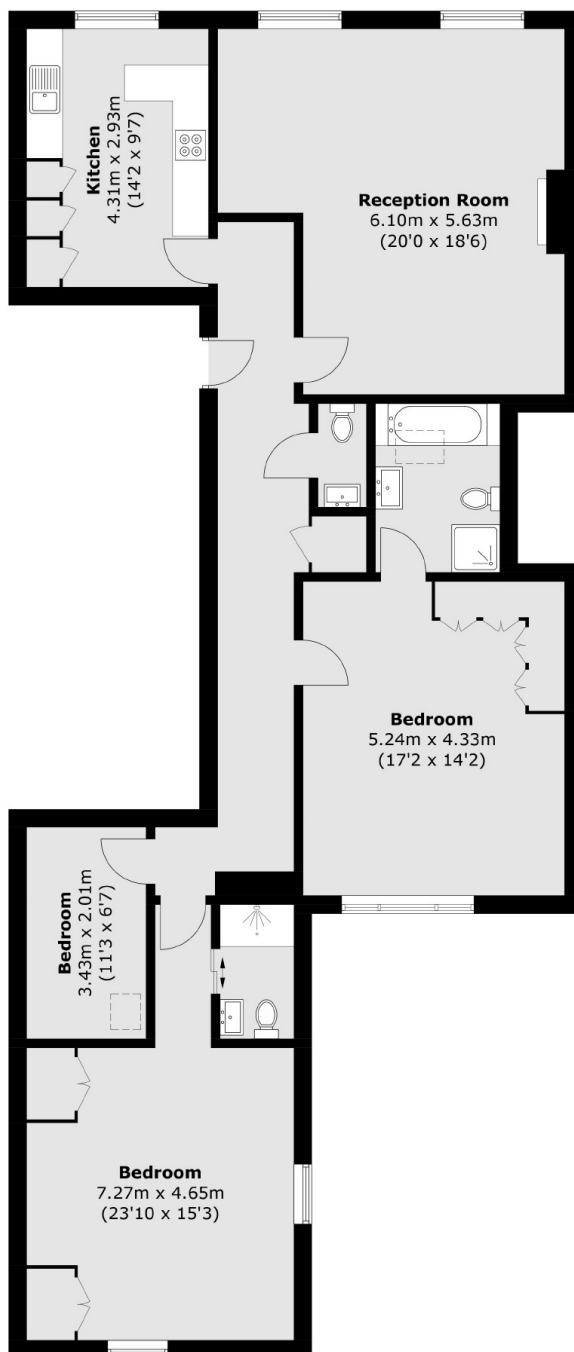


Bryanston Square, W1H

The apartment has a bright reception with adequate space to dine, a sleek modern kitchen with integrated appliances and a breakfast bar. The main bedroom has fitted wardrobes and an en suite bathroom, the second double bedroom has a dual aspect bedrooms, shower room and there is study that could be used as an occasional bedroom with natural light from a skylight. The common areas of the building have recently been decorated. Residents can apply for on street permit parking.



Bryanston Square, London, W1H



Total area (approx.): 130.7 sq. m (1,406.8 sq. ft)