



Oxendon Street, SW1Y

£4,600,000

A Grade II listed freehold house located in the heart of London's Theatreland. Arranged over six floors with the benefit of a large roof terrace.

The location affords residents access to the West End and St James's on foot. Transport links are at Charing Cross, Piccadilly Circus and Leicester Square.

Features

- Grade II Listing
- Freehold
- Five Bedrooms
- Drawing Room
- Kitchen - Dining Room
- Terrace



Oxendon Street, SW1Y

It is thought that a house has stood on the site since c 1673. The period style front was rebuilt in 1958 with a reset sundial dated 1679.

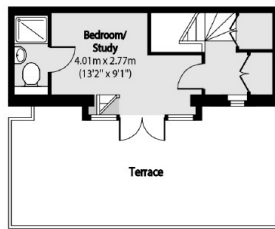
This fine home has period dimensions and sash windows allowing for plenty of natural light. The lower ground floor features two bedrooms, one of the two reception areas, and one en-suite bathroom. The ground floor entrance lobby leads to the kitchen which can ably accommodate a large dining table. The first floor is occupied by a bedroom which could be restructured to a drawing room. The upper floor houses the four further double bedrooms with three of them having access to en-suite bathrooms. Additionally a large private roof terrace overlooks the local skyline.



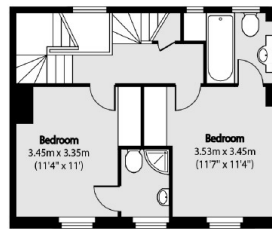
Oxendon Street, London, SW1Y



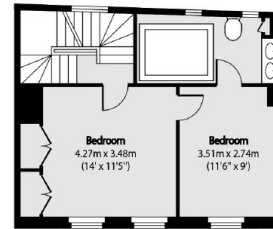
Mezzanine



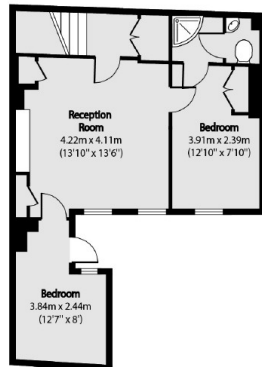
Fourth Floor



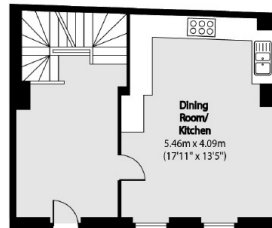
Third Floor



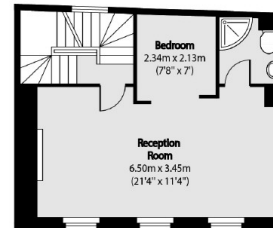
Second Floor



Lower Ground Floor



Ground Floor



First Floor

Total area (approx): 215.07 sq m (2315 sq. ft)
(Including Mezzanine)

Terrace total area (approx): 21.27 sq m (229 sq. ft)