



Wigmore Street, W1U

£2,000,000

An impressive apartment located in a period building with direct lift access. With two double en suite bedrooms and a dual reception - dining room.

Located at the corner of Marylebone Lane moments from Bond Street Station and the world class amenities of Marylebone Village and Mayfair.

Features

- Two Double Bedrooms
- Two En Suites
- Reception
- Guest Cloakroom
- Direct Lift Access
- Lease 125 from 1998

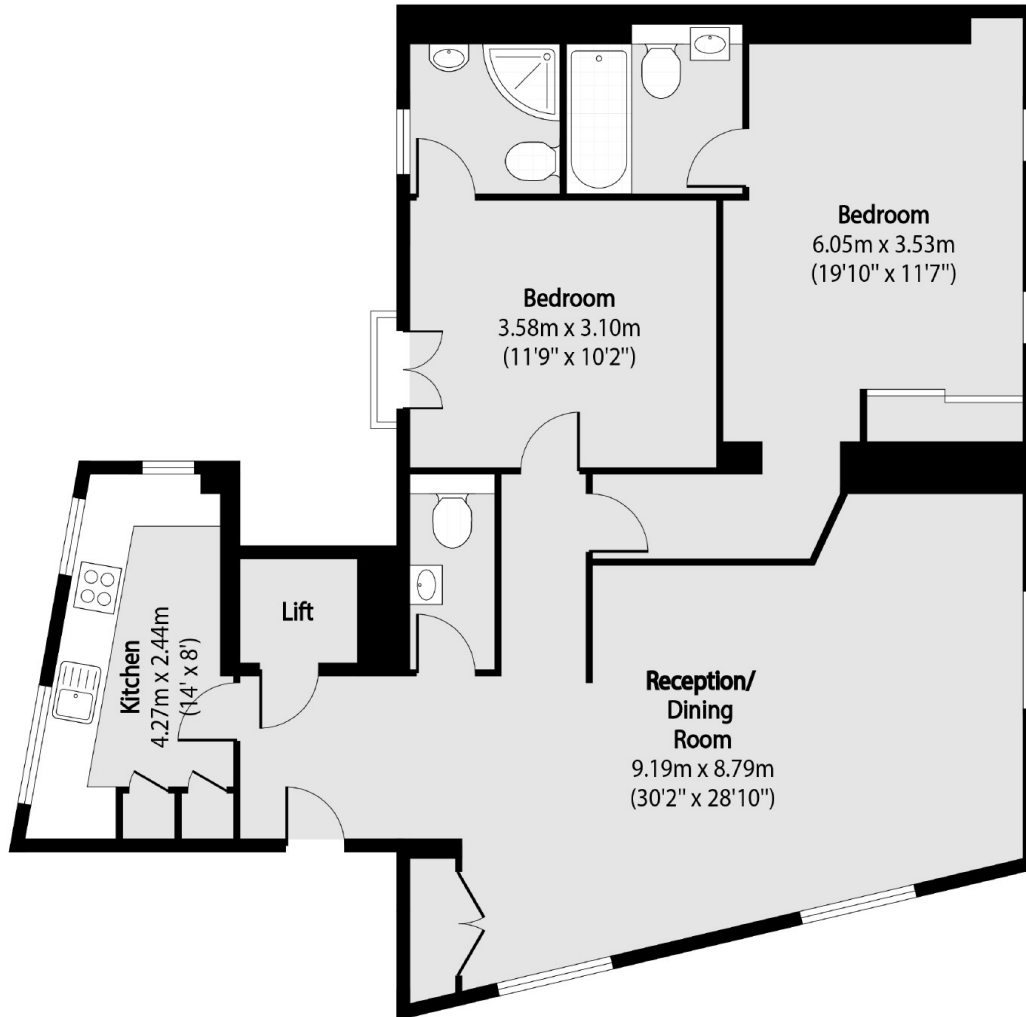


Wigmore Street, W1U

Located on the third floor of a building with four apartments. The property has an combined reception- dining room and separate integrated kitchen. Both bedrooms are doubles with en suite and there is a guest cloakroom.



Wigmore Street, London, W1U



Total area (approx): 90.12 sq m (970 sq. ft)
(Including Lift)