



Glentworth Street, NW1

£1,295,000

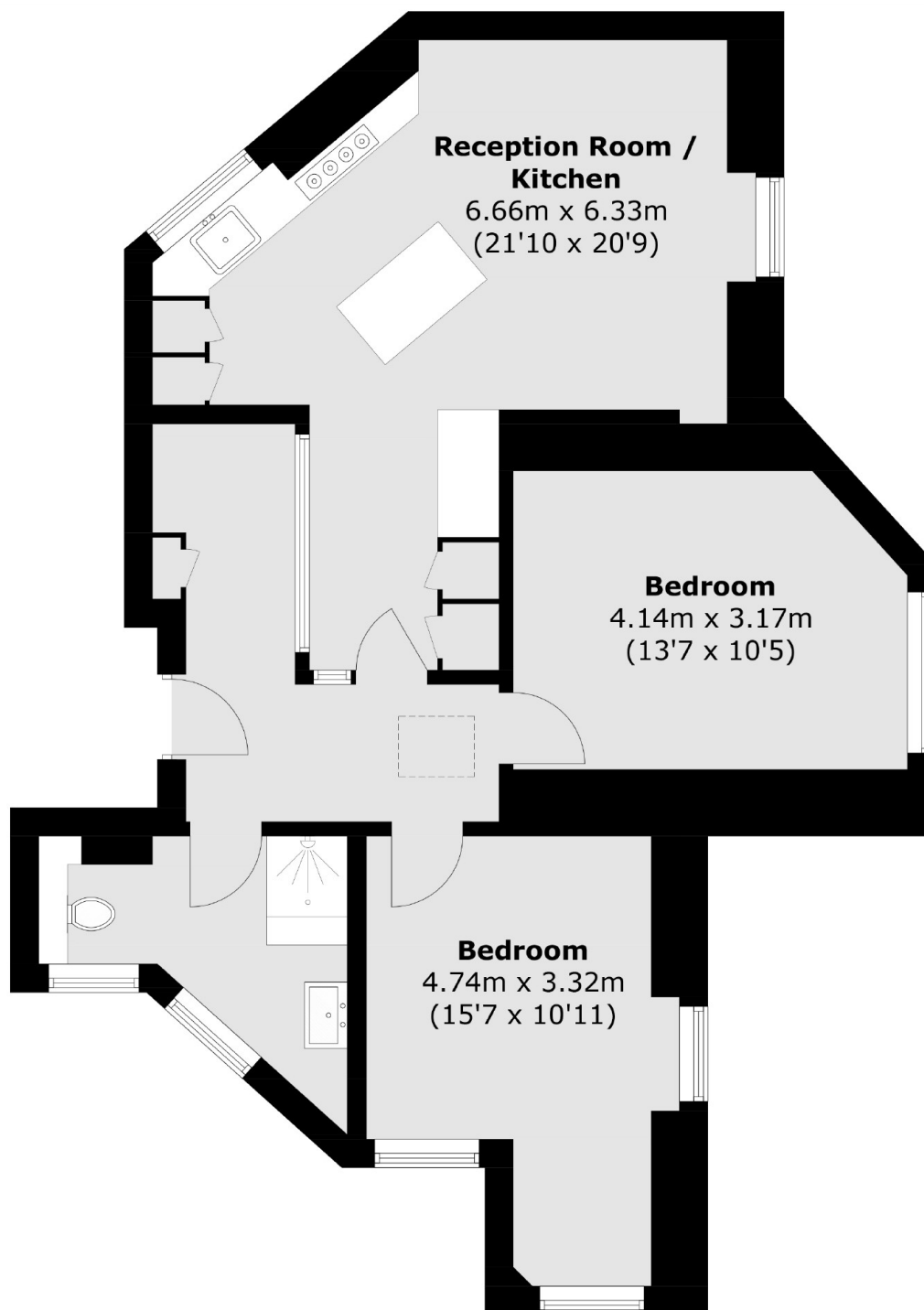
A top floor westerly facing apartment in Clarence Gate Gardens, a Victorian red brick block located moments from Baker Street and Regents Park.

The property is on Glentworth Street, just off Baker Street with an abundance of local shops, restaurants, cafes and bars, well served with transport links with Baker Street and Marylebone stations within a short walk. The open spaces of Regent's Park are only a short walk away.

Features

Two Double Bedrooms
Kitchen
Reception
999 Lease with Share of Freehold
Day Porter
Lift

Glentworth Street, London, NW1



Total area (approx.): 73.3 sq. m (789.0 sq. ft)

Dexters

Marylebone
53-55 Weymouth Street
London
W1G 8NJ
Sales
020 7224 5544

Energy Rating: E. We aim to make our particulars both accurate and reliable. However they are not guaranteed; nor do they form part of an offer or contract. If you require clarification on any points then please contact us, especially if you're traveling some distance to view. Please note that appliances and heating systems have not been tested and therefore no warranties can be given as to their good working order.

 **RICS** | Regulated
Estate Agent
and Letting Agent

[dexters.co.uk](https://www.dexters.co.uk)