



Montagu Mansions, W1U

£3,450,000

Dexters



Montagu Mansions, W1U

A turn key apartment with three double bedrooms situated in a red-brick mansion block. Renovated to a high specification the home effectively blends contemporary additions with period features.

The apartment has a large entrance hall with double door leading to the reception - dining room with marble fireplace, parquet flooring and a bay window. The room opens to a sleek dine-in kitchen which has Gaggenau appliances and contemporary space-grey cabinetry. The principal bedroom has an en suite, a bay window and extensive wardrobe space. The two further bedrooms each have built-in storage and are served by the main bathroom. Both bathrooms feature marble walls, adding a sense of luxury to the space. Additionally there is significant built in storage space in the hallway.

Located close to Baker Street, Chiltern Street and Marylebone Village. Regents Park and the transport links of Baker Street are moments away.

Features

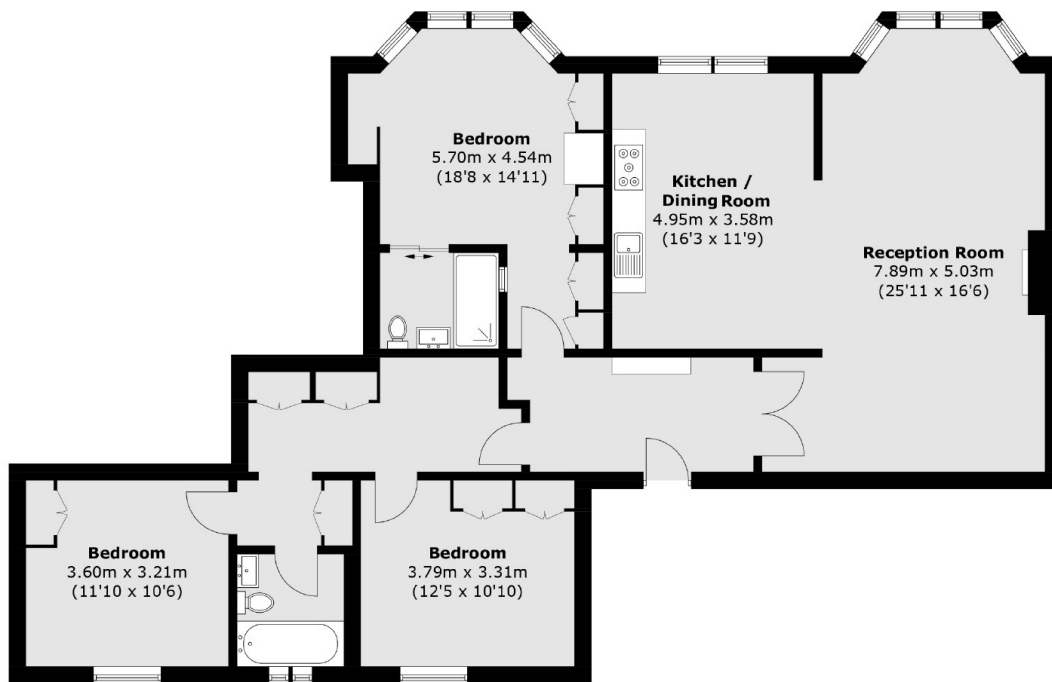
- Three Double Bedrooms
- Two Bathrooms
- Reception- Dining Room
- Kitchen
- Share of Freehold
- Lift and Porter 24 hours







Montagu Mansions, London, W1U



Total area (approx.): 125.8 sq. m (1,354.1 sq. ft)