



**Weymouth Street, W1W**

£900,000

**Dexters**



## Weymouth Street, W1W

A two double bedroom apartment in a well maintained period block, with a lift and porter.

The main bedroom has an attractive bay window and built in storage as does the second double bedroom. The modern open plan kitchen and reception room provides excellent entertaining space.

Stone House is a substantial corner apartment building with an impressive reception foyer and lift. The property is presented in good decorative order and has excellent storage throughout.

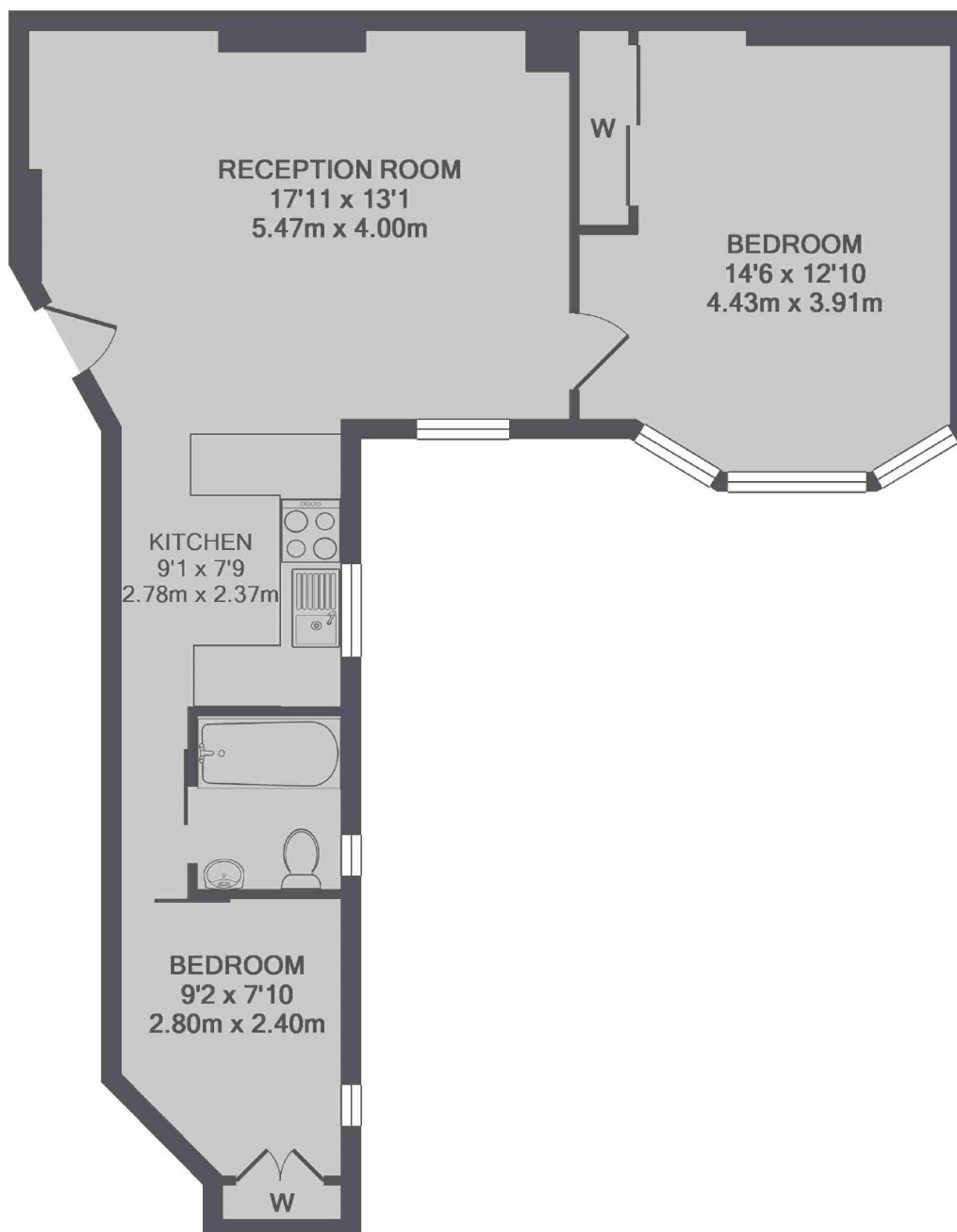
Located just off Portland Place with Regents Park, Marylebone High Street, Great Portland Street and Oxford Circus all within half-a-mile's walking distance.

### Features

- Two Bedrooms
- Modern Kitchen
- Porter
- Long Lease
- Impressive Entrance
- Close To Regent's Park



# Weymouth Street, London, W1W



TOTAL APPROX. FLOOR AREA 596 SQ.FT. (55.4 SQ.M.)