

**Palgrave Gardens, NW1**

**£1,250,000**

**Dexters**



## Palgrave Gardens, NW1

A modern apartment with two double bedrooms and two bathrooms. Overlooking landscaped gardens in a gated private development with concierge and residents gym and pool.

The apartment has a reception room with adequate space to dine and two balconies, separate kitchen, a main bedroom with Ensuite, second double bedroom and second bathroom. A passenger lift provides access to the car under building car park.

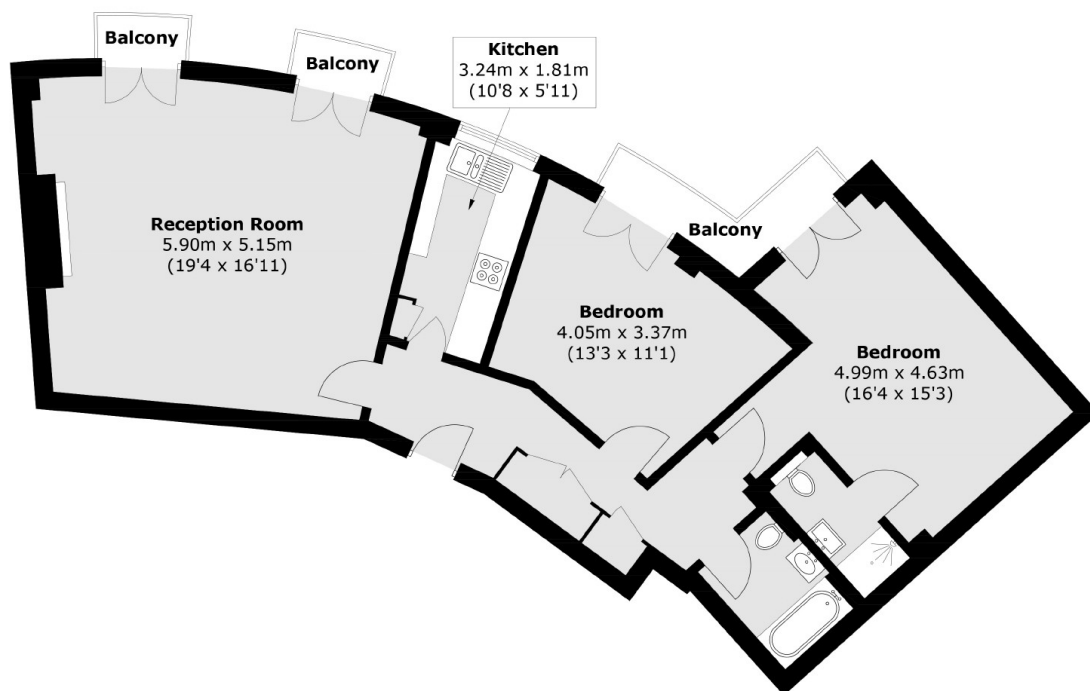
Located close to Regents Park, Baker Street and Marylebone High Street.

### Features

- Two Double Bedrooms
- Main Bedroom En Suite
- Reception - Dining Room
- Under Building Parking Space
- Lift & Concierge
- Residents Amenities



# Palgrave Gardens, London, NW1



Total area (approx.): 86.8 sq. m (934.3 sq. ft)  
Balcony area : 5.3 sq. m (57.0 sq. ft)

**Dexters**

Marylebone  
53-55 Weymouth Street  
London  
W1G 8NJ  
Sales  
020 7224 5544

Energy Rating: B. We aim to make our particulars both accurate and reliable. However they are not guaranteed; nor do they form part of an offer or contract. If you require clarification on any points then please contact us, especially if you're traveling some distance to view. Please note that appliances and heating systems have not been tested and therefore no warranties can be given as to their good working order.

 **RICS** | Regulated  
Estate Agent  
and Letting Agent

[dexters.co.uk](http://dexters.co.uk)