



## Marylebone Street, W1G

£995,000

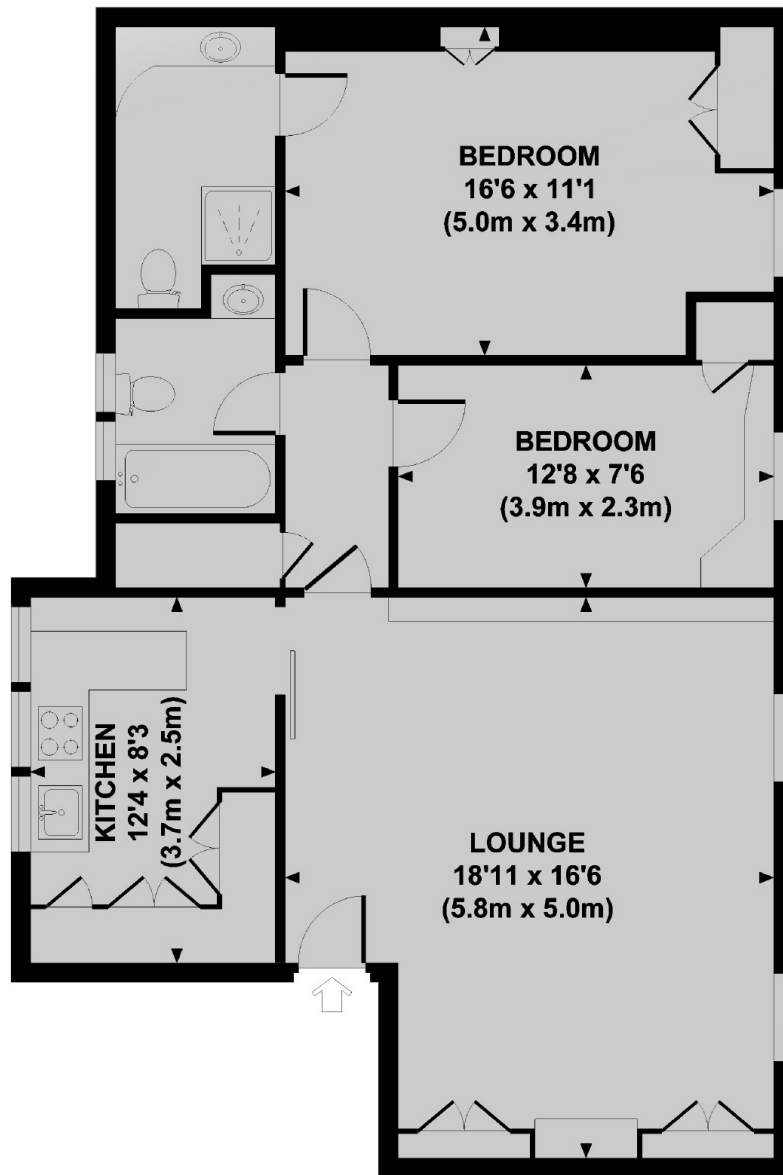
A bright two double bedroom, two bathroom apartment located on the top floor of a smaller purpose-built block. Located in the heart of Marylebone Village just moments from the High Street.

Nestled between New Cavendish Street and Weymouth Street, the apartment is ideally located for the vibrant shops, bars and restaurants of Marylebone High Street, as well as being a short stroll from the open spaces of Regent's Park. The nearest tube link is Bond Street.

### Features

- Top Floor
- Two Double Bedrooms
- Two Bathrooms
- Marylebone Village Location
- Lease to 2121
- No Onward Chain

# Marylebone Street, London, W1G



## FOURTH FLOOR

Approx. gross internal area  
815 Sq Ft. / 75.8 Sq M.