



Hallam Street, W1W

£625,000

A rare opportunity to acquire a one bedroom apartment with its own large private roof terrace. Situated in a smart residential block moments from Regents Park and Marylebone High Street.

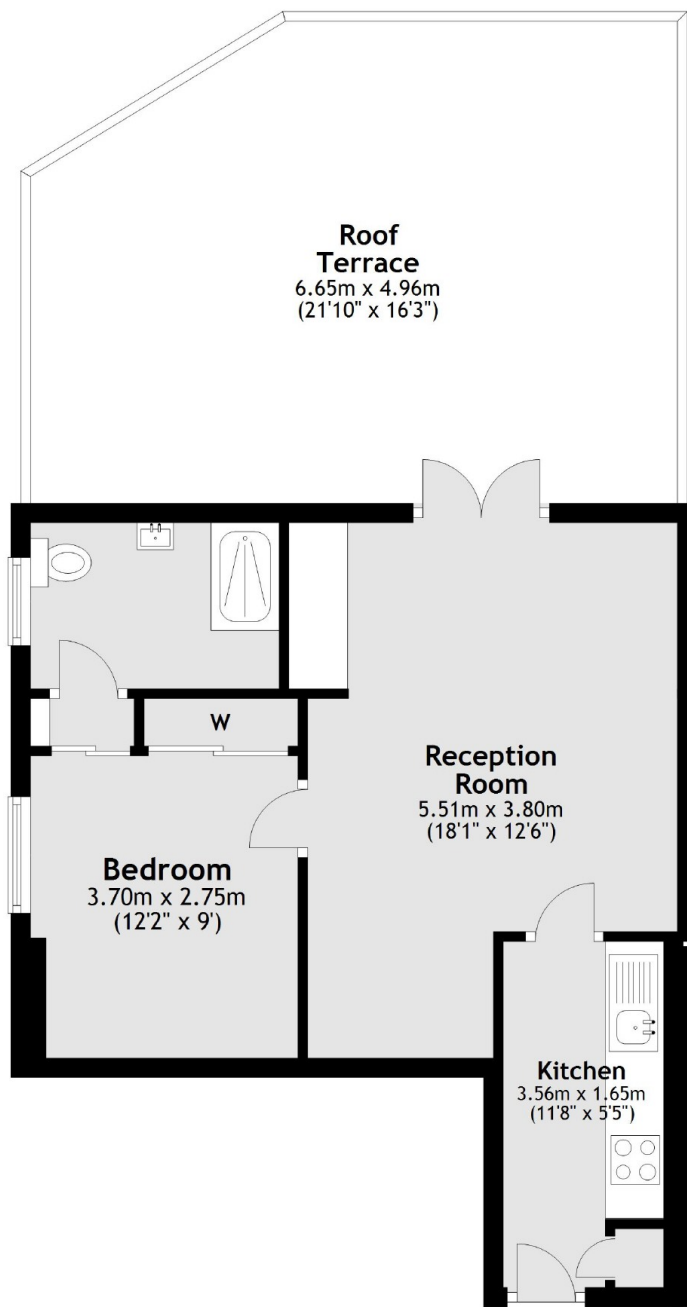
Located just moments from Regent's Park and Marylebone High Street in a Prime Central London location, Hallam Street is within close proximity to the retail facilities, restaurants and facilities of London's West End.

Features

- One Bedroom
- En Suite Shower Room
- Reception
- Kitchen
- Private Roof Terrace
- Lift & Day Porter

Hallam Street,
London, W1W

Third Floor



Main area: Approx. 40.3 sq. metres (434.3 sq. feet)
Plus roof terrace, approx. 31.6 sq. metres (339.6 sq. feet)

Dexters

Marylebone
53-55 Weymouth Street
London
W1G 8NJ
Sales
020 7224 5544

Energy Rating: D. We aim to make our particulars both accurate and reliable. However they are not guaranteed; nor do they form part of an offer or contract. If you require clarification on any points then please contact us, especially if you're traveling some distance to view. Please note that appliances and heating systems have not been tested and therefore no warranties can be given as to their good working order.

 **RICS** | Regulated
Estate Agent
and Letting Agent

dexters.co.uk